

Caution: Forms printed from within Adobe Acrobat products may not meet IRS or state taxing agency specifications. When using Acrobat 5.x products, uncheck the "Shrink oversized pages to paper size" and uncheck the "Expand small pages to paper size" options, in the Adobe "Print" dialog. When using Acrobat 6.x and later products versions, select "None" in the "Page Scaling" selection box in the Adobe "Print" dialog.

CLIENT'S COPY

DRAFT

February 4, 2013

Mr. Brook McDonald
The Conservation Foundation
10S404 Knoch Knolls Road
Naperville, IL 60565

Dear Brook:

Enclosed are the 2011 Exempt Organization returns, as follows...

2011 FORM 990

2011 ILLINOIS FORM AG990-IL

Each original should be dated, signed and filed in accordance with the filing instructions. The copy should be retained for your files.

We sincerely appreciate the opportunity to serve you. Please contact us if you have any questions concerning the tax return.

Very truly yours,

Scott C. Termine
Partner

TAX RETURN FILING INSTRUCTIONS

FORM 990

FOR THE YEAR ENDING

June 30, 2012

Prepared for	Mr. Brook Mcdonald The Conservation Foundation 10S404 Knoch Knolls Road Naperville, IL 60565
Prepared by	Wolf & Company LLP 1901 S. Meyers Rd, Suite 500 Oakbrook Terrace, IL 60181-5209
Amount due or refund	Not applicable
Make check payable to	Not applicable
Mail tax return and check (if applicable) to	Not applicable
Return must be mailed on or before	Not applicable
Special Instructions	This return has been prepared for electronic filing. If you wish to have it transmitted electronically to the IRS, please sign, date, and return Form 8879-EO to our office. We will then submit the electronic return to the IRS. Do not mail a paper copy of the return to the IRS.

Return of Organization Exempt From Income Tax
 Under section 501(c), 527, or 4947(a)(1) of the Internal Revenue Code (except black lung benefit trust or private foundation)

Department of the Treasury
Internal Revenue Service

▶ The organization may have to use a copy of this return to satisfy state reporting requirements.

Open to Public Inspection

A For the 2011 calendar year, or tax year beginning JUL 1, 2011 and ending JUN 30, 2012

B Check if applicable: <input type="checkbox"/> Address change <input type="checkbox"/> Name change <input type="checkbox"/> Initial return <input type="checkbox"/> Terminated <input type="checkbox"/> Amended return <input type="checkbox"/> Application pending	C Name of organization THE CONSERVATION FOUNDATION Doing Business As Number and street (or P.O. box if mail is not delivered to street address) Room/suite 10S404 KNOCH KNOLLS ROAD City or town, state or country, and ZIP + 4 NAPERVILLE, IL 60565 F Name and address of principal officer: BROOK MCDONALD SAME AS C ABOVE	D Employer identification number 23-7221206 E Telephone number 630-428-4500 G Gross receipts \$ 1,350,294. H(a) Is this a group return for affiliates? <input type="checkbox"/> Yes <input checked="" type="checkbox"/> No H(b) Are all affiliates included? <input type="checkbox"/> Yes <input type="checkbox"/> No If "No," attach a list. (see instructions) H(c) Group exemption number ▶
I Tax-exempt status: <input checked="" type="checkbox"/> 501(c)(3) <input type="checkbox"/> 501(c) () ◀ (insert no.) <input type="checkbox"/> 4947(a)(1) or <input type="checkbox"/> 527		
J Website: ▶ WWW.THECONSERVATIONFOUNDATION.ORG		
K Form of organization: <input checked="" type="checkbox"/> Corporation <input type="checkbox"/> Trust <input type="checkbox"/> Association <input type="checkbox"/> Other ▶		L Year of formation: 1972 M State of legal domicile: IL

Part I Summary			
		1 Briefly describe the organization's mission or most significant activities: TO PRESERVE OPEN SPACE AND PROMOTE STEWARDSHIP OF OUR ENVIRONMENT.	
		2 Check this box <input type="checkbox"/> if the organization discontinued its operations or disposed of more than 25% of its net assets.	
Activities & Governance	3	Number of voting members of the governing body (Part VI, line 1a)	18
	4	Number of independent voting members of the governing body (Part VI, line 1b)	18
	5	Total number of individuals employed in calendar year 2011 (Part V, line 2a)	22
	6	Total number of volunteers (estimate if necessary)	500
	7a	Total unrelated business revenue from Part VIII, column (C), line 12	0.
	7b	Net unrelated business taxable income from Form 990-T, line 34	0.
Revenue			Prior Year Current Year
	8	Contributions and grants (Part VIII, line 1h)	1,230,916. 689,857.
	9	Program service revenue (Part VIII, line 2g)	350,097. 334,252.
	10	Investment income (Part VIII, column (A), lines 3, 4, and 7d)	9,460. 4,400.
	11	Other revenue (Part VIII, column (A), lines 5, 6d, 8c, 9c, 10c, and 11e)	201,648. 141,910.
	12	Total revenue - add lines 8 through 11 (must equal Part VIII, column (A), line 12)	1,792,121. 1,170,419.
Expenses	13	Grants and similar amounts paid (Part IX, column (A), lines 1-3)	0. 0.
	14	Benefits paid to or for members (Part IX, column (A), line 4)	0. 0.
	15	Salaries, other compensation, employee benefits (Part IX, column (A), lines 5-10)	803,805. 826,848.
	16a	Professional fundraising fees (Part IX, column (A), line 11e)	0. 0.
	b	Total fundraising expenses (Part IX, column (D), line 25) ▶ 209,782.	
	17	Other expenses (Part IX, column (A), lines 11a-11d, 11f-24e)	983,822. 376,394.
18	Total expenses. Add lines 13-17 (must equal Part IX, column (A), line 25)	1,787,627. 1,203,242.	
19	Revenue less expenses. Subtract line 18 from line 12	4,494. -32,823.	
Net Assets or Fund Balances			Beginning of Current Year End of Year
	20	Total assets (Part X, line 16)	3,918,168. 3,928,359.
	21	Total liabilities (Part X, line 26)	316,549. 354,997.
22	Net assets or fund balances. Subtract line 21 from line 20	3,601,619. 3,573,362.	

Part II Signature Block

Under penalties of perjury, I declare that I have examined this return, including accompanying schedules and statements, and to the best of my knowledge and belief, it is true, correct, and complete. Declaration of preparer (other than officer) is based on all information of which preparer has any knowledge.

Sign Here	▶ Signature of officer BROOK MCDONALD, PRESIDENT/CEO	Date	
Paid Preparer Use Only	Print/Type preparer's name SCOTT C. TERMINE	Preparer's signature	Date
	Firm's name ▶ WOLF & COMPANY LLP	Firm's EIN ▶ 36-2985665	Check if self-employed <input type="checkbox"/> PTIN P00137961
	Firm's address ▶ 1901 S. MEYERS RD, SUITE 500 OAKBROOK TERRACE, IL 60181-5209	Phone no. (630) 545-4500	

May the IRS discuss this return with the preparer shown above? (see instructions) Yes No

Part III Statement of Program Service Accomplishments

Check if Schedule O contains a response to any question in this Part III [X]

1 Briefly describe the organization's mission: TO PRESERVE OPEN SPACE AND PROMOTE STEWARDSHIP OF OUR ENVIRONMENT.

2 Did the organization undertake any significant program services during the year which were not listed on the prior Form 990 or 990-EZ? [] Yes [X] No

3 Did the organization cease conducting, or make significant changes in how it conducts, any program services? [] Yes [X] No

4 Describe the organization's program service accomplishments for each of its three largest program services, as measured by expenses.

4a (Code:) (Expenses \$ 918,957. including grants of \$) (Revenue \$ 334,252.) INITIATED AN OPEN SPACE MASTER PLANNING PROCESS FOR DUPAGE COUNTY. HAD A RECORD 620 VOLUNTEERS PARTICIPATE IN THE DUPAGE RIVER SWEEP WHO REMOVED OVER 9 TONS OF TRASH FROM THE RIVER AND RESTORED 4 ACRES TO NATIVE HABITAT. COMPLETED THE LOWER FOX RIVER LAND CONSERVATION MASTER PLAN. CERTIFIED 78 PROPERTIES THROUGH THE CONSERVATION @ HOME PROGRAM. CREATED A NEW CONSERVATION @ WORK INITIATIVE. DISTRIBUTED OVER 800 RAIN BARRELS TO VARIOUS COMMUNITIES. FACILITATED COMPLETION OF TWO COMMUNITY RAIN GARDENS. TRANSFERRED LAND ALONG THE FOX RIVER TO THE BATAVIA PARK DISTRICT. FACILITATED LAND EXCHANGE BETWEEN WAUBONSEE COMMUNITY COLLEGE AND KANE FOREST PRESERVE DISTRICT, WITH 66 ACRES GOING TO THE FOREST PRESERVE AND 33 ACRES GOING TO THE COLLEGE. NEGOTIATED FOR TWO PROPERTIES ON BEHALF OF FOX VALLEY PARK DISTRICT. ESTABLISHED THE LOWER

4b (Code:) (Expenses \$ including grants of \$) (Revenue \$)

4c (Code:) (Expenses \$ including grants of \$) (Revenue \$)

4d Other program services (Describe in Schedule O.) (Expenses \$ including grants of \$) (Revenue \$)

4e Total program service expenses 918,957.

Part IV Checklist of Required Schedules

	Yes	No
1 Is the organization described in section 501(c)(3) or 4947(a)(1) (other than a private foundation)? <i>If "Yes," complete Schedule A</i>	<input checked="" type="checkbox"/>	
2 Is the organization required to complete <i>Schedule B, Schedule of Contributors</i> ?	<input checked="" type="checkbox"/>	
3 Did the organization engage in direct or indirect political campaign activities on behalf of or in opposition to candidates for public office? <i>If "Yes," complete Schedule C, Part I</i>		<input checked="" type="checkbox"/>
4 Section 501(c)(3) organizations. Did the organization engage in lobbying activities, or have a section 501(h) election in effect during the tax year? <i>If "Yes," complete Schedule C, Part II</i>	<input checked="" type="checkbox"/>	
5 Is the organization a section 501(c)(4), 501(c)(5), or 501(c)(6) organization that receives membership dues, assessments, or similar amounts as defined in Revenue Procedure 98-19? <i>If "Yes," complete Schedule C, Part III</i>		<input checked="" type="checkbox"/>
6 Did the organization maintain any donor advised funds or any similar funds or accounts for which donors have the right to provide advice on the distribution or investment of amounts in such funds or accounts? <i>If "Yes," complete Schedule D, Part I</i>		<input checked="" type="checkbox"/>
7 Did the organization receive or hold a conservation easement, including easements to preserve open space, the environment, historic land areas, or historic structures? <i>If "Yes," complete Schedule D, Part II</i>	<input checked="" type="checkbox"/>	
8 Did the organization maintain collections of works of art, historical treasures, or other similar assets? <i>If "Yes," complete Schedule D, Part III</i>		<input checked="" type="checkbox"/>
9 Did the organization report an amount in Part X, line 21; serve as a custodian for amounts not listed in Part X; or provide credit counseling, debt management, credit repair, or debt negotiation services? <i>If "Yes," complete Schedule D, Part IV</i>	<input checked="" type="checkbox"/>	
10 Did the organization, directly or through a related organization, hold assets in temporarily restricted endowments, permanent endowments, or quasi-endowments? <i>If "Yes," complete Schedule D, Part V</i>		<input checked="" type="checkbox"/>
11 If the organization's answer to any of the following questions is "Yes," then complete Schedule D, Parts VI, VII, VIII, IX, or X as applicable.		
a Did the organization report an amount for land, buildings, and equipment in Part X, line 10? <i>If "Yes," complete Schedule D, Part VI</i>	<input checked="" type="checkbox"/>	
b Did the organization report an amount for investments - other securities in Part X, line 12 that is 5% or more of its total assets reported in Part X, line 16? <i>If "Yes," complete Schedule D, Part VII</i>		<input checked="" type="checkbox"/>
c Did the organization report an amount for investments - program related in Part X, line 13 that is 5% or more of its total assets reported in Part X, line 16? <i>If "Yes," complete Schedule D, Part VIII</i>		<input checked="" type="checkbox"/>
d Did the organization report an amount for other assets in Part X, line 15 that is 5% or more of its total assets reported in Part X, line 16? <i>If "Yes," complete Schedule D, Part IX</i>		<input checked="" type="checkbox"/>
e Did the organization report an amount for other liabilities in Part X, line 25? <i>If "Yes," complete Schedule D, Part X</i>	<input checked="" type="checkbox"/>	
f Did the organization's separate or consolidated financial statements for the tax year include a footnote that addresses the organization's liability for uncertain tax positions under FIN 48 (ASC 740)? <i>If "Yes," complete Schedule D, Part X</i>		<input checked="" type="checkbox"/>
12a Did the organization obtain separate, independent audited financial statements for the tax year? <i>If "Yes," complete Schedule D, Parts XI, XII, and XIII</i>	<input checked="" type="checkbox"/>	
b Was the organization included in consolidated, independent audited financial statements for the tax year? <i>If "Yes," and if the organization answered "No" to line 12a, then completing Schedule D, Parts XI, XII, and XIII is optional</i>		<input checked="" type="checkbox"/>
13 Is the organization a school described in section 170(b)(1)(A)(ii)? <i>If "Yes," complete Schedule E</i>		<input checked="" type="checkbox"/>
14a Did the organization maintain an office, employees, or agents outside of the United States?		<input checked="" type="checkbox"/>
b Did the organization have aggregate revenues or expenses of more than \$10,000 from grantmaking, fundraising, business, investment, and program service activities outside the United States, or aggregate foreign investments valued at \$100,000 or more? <i>If "Yes," complete Schedule F, Parts I and IV</i>		<input checked="" type="checkbox"/>
15 Did the organization report on Part IX, column (A), line 3, more than \$5,000 of grants or assistance to any organization or entity located outside the United States? <i>If "Yes," complete Schedule F, Parts II and IV</i>		<input checked="" type="checkbox"/>
16 Did the organization report on Part IX, column (A), line 3, more than \$5,000 of aggregate grants or assistance to individuals located outside the United States? <i>If "Yes," complete Schedule F, Parts III and IV</i>		<input checked="" type="checkbox"/>
17 Did the organization report a total of more than \$15,000 of expenses for professional fundraising services on Part IX, column (A), lines 6 and 11e? <i>If "Yes," complete Schedule G, Part I</i>		<input checked="" type="checkbox"/>
18 Did the organization report more than \$15,000 total of fundraising event gross income and contributions on Part VIII, lines 1c and 8a? <i>If "Yes," complete Schedule G, Part II</i>	<input checked="" type="checkbox"/>	
19 Did the organization report more than \$15,000 of gross income from gaming activities on Part VIII, line 9a? <i>If "Yes," complete Schedule G, Part III</i>		<input checked="" type="checkbox"/>
20a Did the organization operate one or more hospital facilities? <i>If "Yes," complete Schedule H</i>		<input checked="" type="checkbox"/>
b If "Yes" to line 20a, did the organization attach a copy of its audited financial statements to this return?		

Part IV Checklist of Required Schedules (continued)

	Yes	No
21 Did the organization report more than \$5,000 of grants and other assistance to any government or organization in the United States on Part IX, column (A), line 1? <i>If "Yes," complete Schedule I, Parts I and II</i>		X
22 Did the organization report more than \$5,000 of grants and other assistance to individuals in the United States on Part IX, column (A), line 2? <i>If "Yes," complete Schedule I, Parts I and III</i>		X
23 Did the organization answer "Yes" to Part VII, Section A, line 3, 4, or 5 about compensation of the organization's current and former officers, directors, trustees, key employees, and highest compensated employees? <i>If "Yes," complete Schedule J</i>	X	
24a Did the organization have a tax-exempt bond issue with an outstanding principal amount of more than \$100,000 as of the last day of the year, that was issued after December 31, 2002? <i>If "Yes," answer lines 24b through 24d and complete Schedule K. If "No," go to line 25</i>		X
b Did the organization invest any proceeds of tax-exempt bonds beyond a temporary period exception?		
c Did the organization maintain an escrow account other than a refunding escrow at any time during the year to defease any tax-exempt bonds?		
d Did the organization act as an "on behalf of" issuer for bonds outstanding at any time during the year?		
25a Section 501(c)(3) and 501(c)(4) organizations. Did the organization engage in an excess benefit transaction with a disqualified person during the year? <i>If "Yes," complete Schedule L, Part I</i>		X
b Is the organization aware that it engaged in an excess benefit transaction with a disqualified person in a prior year, and that the transaction has not been reported on any of the organization's prior Forms 990 or 990-EZ? <i>If "Yes," complete Schedule L, Part I</i>		X
26 Was a loan to or by a current or former officer, director, trustee, key employee, highly compensated employee, or disqualified person outstanding as of the end of the organization's tax year? <i>If "Yes," complete Schedule L, Part II</i>		X
27 Did the organization provide a grant or other assistance to an officer, director, trustee, key employee, substantial contributor or employee thereof, a grant selection committee member, or to a 35% controlled entity or family member of any of these persons? <i>If "Yes," complete Schedule L, Part III</i>		X
28 Was the organization a party to a business transaction with one of the following parties (see Schedule L, Part IV instructions for applicable filing thresholds, conditions, and exceptions):		
a A current or former officer, director, trustee, or key employee? <i>If "Yes," complete Schedule L, Part IV</i>		X
b A family member of a current or former officer, director, trustee, or key employee? <i>If "Yes," complete Schedule L, Part IV</i>		X
c An entity of which a current or former officer, director, trustee, or key employee (or a family member thereof) was an officer, director, trustee, or direct or indirect owner? <i>If "Yes," complete Schedule L, Part IV</i>	X	
29 Did the organization receive more than \$25,000 in non-cash contributions? <i>If "Yes," complete Schedule M</i>		X
30 Did the organization receive contributions of art, historical treasures, or other similar assets, or qualified conservation contributions? <i>If "Yes," complete Schedule M</i>		X
31 Did the organization liquidate, terminate, or dissolve and cease operations? <i>If "Yes," complete Schedule N, Part I</i>		X
32 Did the organization sell, exchange, dispose of, or transfer more than 25% of its net assets? <i>If "Yes," complete Schedule N, Part II</i>		X
33 Did the organization own 100% of an entity disregarded as separate from the organization under Regulations sections 301.7701-2 and 301.7701-3? <i>If "Yes," complete Schedule R, Part I</i>		X
34 Was the organization related to any tax-exempt or taxable entity? <i>If "Yes," complete Schedule R, Parts II, III, IV, and V, line 1</i>		X
35a Did the organization have a controlled entity within the meaning of section 512(b)(13)?		X
b Did the organization receive any payment from or engage in any transaction with a controlled entity within the meaning of section 512(b)(13)? <i>If "Yes," complete Schedule R, Part V, line 2</i>		X
36 Section 501(c)(3) organizations. Did the organization make any transfers to an exempt non-charitable related organization? <i>If "Yes," complete Schedule R, Part V, line 2</i>		X
37 Did the organization conduct more than 5% of its activities through an entity that is not a related organization and that is treated as a partnership for federal income tax purposes? <i>If "Yes," complete Schedule R, Part VI</i>		X
38 Did the organization complete Schedule O and provide explanations in Schedule O for Part VI, lines 11 and 19?	X	

Note. All Form 990 filers are required to complete Schedule O

Part V Statements Regarding Other IRS Filings and Tax Compliance

Check if Schedule O contains a response to any question in this Part V

Input box for Schedule O response

Main table with columns for question number, description, sub-questions (1a-1b, 2a-2b, etc.), and Yes/No columns. Includes questions about Form 1096, Form W-2G, Form W-3, and various tax compliance issues.

Part VI Governance, Management, and Disclosure For each "Yes" response to lines 2 through 7b below, and for a "No" response to line 8a, 8b, or 10b below, describe the circumstances, processes, or changes in Schedule O. See instructions.

Check if Schedule O contains a response to any question in this Part VI [X]

Section A. Governing Body and Management

Table with 3 columns: Question, Yes, No. Rows include: 1a (18), 1b (18), 2, 3, 4, 5, 6, 7a, 7b, 8a, 8b, 9.

Section B. Policies (This Section B requests information about policies not required by the Internal Revenue Code.)

Table with 3 columns: Question, Yes, No. Rows include: 10a, 10b, 11a, 11b, 12a, 12b, 12c, 13, 14, 15a, 15b, 16a, 16b.

Section C. Disclosure

- 17 List the states with which a copy of this Form 990 is required to be filed IL
18 Section 6104 requires an organization to make its Forms 1023 (or 1024 if applicable), 990, and 990-T (Section 501(c)(3)s only) available for public inspection. Indicate how you made these available. Check all that apply.
19 Describe in Schedule O whether (and if so, how), the organization made its governing documents, conflict of interest policy, and financial statements available to the public during the tax year.
20 State the name, physical address, and telephone number of the person who possesses the books and records of the organization: BROOK MCDONALD - 630-428-4500 10S404 KNOCH KNOLLS ROAD, NAPERVILLE, IL 60565-5404

Part VII Compensation of Officers, Directors, Trustees, Key Employees, Highest Compensated Employees, and Independent Contractors

Check if Schedule O contains a response to any question in this Part VII

Section A. Officers, Directors, Trustees, Key Employees, and Highest Compensated Employees

1a Complete this table for all persons required to be listed. Report compensation for the calendar year ending with or within the organization's tax year.

- List all of the organization's **current** officers, directors, trustees (whether individuals or organizations), regardless of amount of compensation. Enter -0- in columns (D), (E), and (F) if no compensation was paid.
- List all of the organization's **current** key employees, if any. See instructions for definition of "key employee."
- List the organization's five **current** highest compensated employees (other than an officer, director, trustee, or key employee) who received reportable compensation (Box 5 of Form W-2 and/or Box 7 of Form 1099-MISC) of more than \$100,000 from the organization and any related organizations.
- List all of the organization's **former** officers, key employees, and highest compensated employees who received more than \$100,000 of reportable compensation from the organization and any related organizations.
- List all of the organization's **former directors or trustees** that received, in the capacity as a former director or trustee of the organization, more than \$10,000 of reportable compensation from the organization and any related organizations.

List persons in the following order: individual trustees or directors; institutional trustees; officers; key employees; highest compensated employees; and former such persons.

Check this box if neither the organization nor any related organization compensated any current officer, director, or trustee.

(A) Name and Title	(B) Average hours per week (describe hours for related organizations in Schedule O)	(C) Position (do not check more than one box, unless person is both an officer and a director/trustee)						(D) Reportable compensation from the organization (W-2/1099-MISC)	(E) Reportable compensation from related organizations (W-2/1099-MISC)	(F) Estimated amount of other compensation from the organization and related organizations
		Individual trustee or director	Institutional trustee	Officer	Key employee	Highest compensated employee	Former			
(1) ROBERT HUTCHINSON DIRECTOR	1.00	X					0.	0.	0.	
(2) JAMES M. HUCK CHAIRMAN	1.00	X		X			0.	0.	0.	
(3) BETTY BRADSHAW DIRECTOR	1.00	X					0.	0.	0.	
(4) RUTH KRETSCHMER DIRECTOR	1.00	X					0.	0.	0.	
(5) BRUCE SCHURMAN DIRECTOR	1.00	X					0.	0.	0.	
(6) JAMES D'AMBROSIO DIRECTOR	1.00	X					0.	0.	0.	
(7) CHRISTOPHER B. BURKE VICE CHAIRMAN	1.00	X		X			0.	0.	0.	
(8) CHRISTINE SOBEK DIRECTOR	1.00	X					0.	0.	0.	
(9) JOE MIKAN DIRECTOR	1.00	X					0.	0.	0.	
(10) JUNE KEIBLER SECRETARY	1.00	X		X			0.	0.	0.	
(11) RICH GUERARD DIRECTOR	1.00	X					0.	0.	0.	
(12) TOM SCHNEIDER TREASURER	1.00	X		X			0.	0.	0.	
(13) JULIE LONG DIRECTOR	1.00	X					0.	0.	0.	
(14) DICK WHITFIELD DIRECTOR	1.00	X					0.	0.	0.	
(15) GAIL BUMGARNER DIRECTOR	1.00	X					0.	0.	0.	
(16) PETE CONNOLLY DIRECTOR	1.00	X					0.	0.	0.	
(17) KAAREN OLDFIELD DIRECTOR	1.00	X					0.	0.	0.	

Part VII Section A. Officers, Directors, Trustees, Key Employees, and Highest Compensated Employees (continued)

(A) Name and title	(B) Average hours per week (describe hours for related organizations in Schedule O)	(C) Position (do not check more than one box, unless person is both an officer and a director/trustee)						(D) Reportable compensation from the organization (W-2/1099-MISC)	(E) Reportable compensation from related organizations (W-2/1099-MISC)	(F) Estimated amount of other compensation from the organization and related organizations
		Individual trustee or director	Institutional trustee	Officer	Key employee	Highest compensated employee	Former			
(18) PAM PARR DIRECTOR	1.00	X						0.	0.	0.
(19) BROOK MCDONALD PRESIDENT/CEO	40.00			X				141,045.	0.	18,922.
1b Sub-total								141,045.	0.	18,922.
c Total from continuation sheets to Part VII, Section A								0.	0.	0.
d Total (add lines 1b and 1c)								141,045.	0.	18,922.

2 Total number of individuals (including but not limited to those listed above) who received more than \$100,000 of reportable compensation from the organization **1**

	Yes	No
3 Did the organization list any former officer, director, or trustee, key employee, or highest compensated employee on line 1a? <i>If "Yes," complete Schedule J for such individual</i>		X
4 For any individual listed on line 1a, is the sum of reportable compensation and other compensation from the organization and related organizations greater than \$150,000? <i>If "Yes," complete Schedule J for such individual</i>	X	
5 Did any person listed on line 1a receive or accrue compensation from any unrelated organization or individual for services rendered to the organization? <i>If "Yes," complete Schedule J for such person</i>		X

Section B. Independent Contractors

1 Complete this table for your five highest compensated independent contractors that received more than \$100,000 of compensation from the organization. Report compensation for the calendar year ending with or within the organization's tax year.

(A) Name and business address	(B) Description of services	(C) Compensation
NONE		

2 Total number of independent contractors (including but not limited to those listed above) who received more than \$100,000 of compensation from the organization **0**

Part VIII Statement of Revenue

			(A) Total revenue	(B) Related or exempt function revenue	(C) Unrelated business revenue	(D) Revenue excluded from tax under sections 512, 513, or 514	
Contributions, Gifts, Grants and Other Similar Amounts	1 a	Federated campaigns					
	b	Membership dues					
	c	Fundraising events					
	d	Related organizations					
	e	Government grants (contributions)	44,541.				
	f	All other contributions, gifts, grants, and similar amounts not included above	645,316.				
	g	Noncash contributions included in lines 1a-1f: \$					
	h	Total. Add lines 1a-1f		689,857.			
	Program Service Revenue	2 a	CONSERVATION SERVICES	Business Code 561000	301,467.	301,467.	
b		SPECIAL EVENTS	812900	32,785.	32,785.		
c							
d							
e							
f		All other program service revenue					
g		Total. Add lines 2a-2f		334,252.			
Other Revenue	3	Investment income (including dividends, interest, and other similar amounts)		9,117.		9,117.	
	4	Income from investment of tax-exempt bond proceeds					
	5	Royalties					
	6 a	Gross rents	(i) Real	20,887.			
			(ii) Personal	0.			
				20,887.			
	b	Less: rental expenses					
	c	Rental income or (loss)					
	d	Net rental income or (loss)		20,887.		20,887.	
	7 a	Gross amount from sales of assets other than inventory	(i) Securities	100,841.			
			(ii) Other				
				105,558.			
				-4,717.			
	d	Net gain or (loss)		-4,717.		-4,717.	
8 a	Gross income from fundraising events (not including \$ _____ of contributions reported on line 1c). See Part IV, line 18	a	156,251.				
		b	Less: direct expenses	74,317.			
		c	Net income or (loss) from fundraising events		81,934.		81,934.
9 a	Gross income from gaming activities. See Part IV, line 19	a					
		b	Less: direct expenses				
		c	Net income or (loss) from gaming activities				
10 a	Gross sales of inventory, less returns and allowances	a					
		b	Less: cost of goods sold				
		c	Net income or (loss) from sales of inventory				
Miscellaneous Revenue			Business Code				
11 a	MERCHANDISE PROMO	812900	37,000.			37,000.	
b	MISCELLANEOUS	812900	2,089.			2,089.	
c							
d	All other revenue						
e	Total. Add lines 11a-11d		39,089.				
12	Total revenue. See instructions.		1,170,419.	334,252.	0.	146,310.	

Part IX Statement of Functional Expenses

Section 501(c)(3) and 501(c)(4) organizations must complete all columns. All other organizations must complete column (A) but are not required to complete columns (B), (C), and (D).

Check if Schedule O contains a response to any question in this Part IX

Do not include amounts reported on lines 6b, 7b, 8b, 9b, and 10b of Part VIII.	(A) Total expenses	(B) Program service expenses	(C) Management and general expenses	(D) Fundraising expenses
1 Grants and other assistance to governments and organizations in the United States. See Part IV, line 21				
2 Grants and other assistance to individuals in the United States. See Part IV, line 22				
3 Grants and other assistance to governments, organizations, and individuals outside the United States. See Part IV, lines 15 and 16				
4 Benefits paid to or for members				
5 Compensation of current officers, directors, trustees, and key employees	170,114.	129,133.	12,613.	28,368.
6 Compensation not included above, to disqualified persons (as defined under section 4958(f)(1)) and persons described in section 4958(c)(3)(B)				
7 Other salaries and wages	550,295.	417,727.	40,803.	91,765.
8 Pension plan accruals and contributions (include section 401(k) and section 403(b) employer contributions)				
9 Other employee benefits	56,195.	42,657.	4,167.	9,371.
10 Payroll taxes	50,244.	38,140.	3,725.	8,379.
11 Fees for services (non-employees):				
a Management				
b Legal	13,258.	10,113.		3,145.
c Accounting	24,869.	21,242.	1,067.	2,560.
d Lobbying				
e Professional fundraising services. See Part IV, line 17				
f Investment management fees				
g Other				
12 Advertising and promotion	56,945.	26,671.	1,652.	28,622.
13 Office expenses	41,935.	22,686.	6,133.	13,116.
14 Information technology				
15 Royalties				
16 Occupancy	48,325.	48,325.		
17 Travel	18,623.	15,414.	1,202.	2,007.
18 Payments of travel or entertainment expenses for any federal, state, or local public officials				
19 Conferences, conventions, and meetings	7,884.	4,697.	902.	2,285.
20 Interest	177.		141.	36.
21 Payments to affiliates				
22 Depreciation, depletion, and amortization	43,830.	40,620.	890.	2,320.
23 Insurance	13,726.	11,896.	365.	1,465.
24 Other expenses. Itemize expenses not covered above. (List miscellaneous expenses in line 24e. If line 24e amount exceeds 10% of line 25, column (A) amount, list line 24e expenses on Schedule O.)				
a PROGRAM EXPENSE	42,646.	37,412.	11.	5,223.
b TRIPS/EVENTS	34,493.	23,434.	0.	11,059.
c MERCHANDISING	24,525.	24,478.	0.	47.
d OUTSIDE SERVICES	5,158.	4,312.	832.	14.
e All other expenses				
25 Total functional expenses. Add lines 1 through 24e	1,203,242.	918,957.	74,503.	209,782.
26 Joint costs. Complete this line only if the organization reported in column (B) joint costs from a combined educational campaign and fundraising solicitation.				

Check here if following SOP 98-2 (ASC 958-720)

Part X Balance Sheet

		(A) Beginning of year		(B) End of year		
Assets	1 Cash - non-interest-bearing	1,190.	1	361,572.		
	2 Savings and temporary cash investments	1,079,195.	2	393,339.		
	3 Pledges and grants receivable, net	253,831.	3	167,665.		
	4 Accounts receivable, net	88,522.	4	57,944.		
	5 Receivables from current and former officers, directors, trustees, key employees, and highest compensated employees. Complete Part II of Schedule L		5			
	6 Receivables from other disqualified persons (as defined under section 4958(f)(1)), persons described in section 4958(c)(3)(B), and contributing employers and sponsoring organizations of section 501(c)(9) voluntary employees' beneficiary organizations (see instructions)		6			
	7 Notes and loans receivable, net		7			
	8 Inventories for sale or use	3,436.	8	1,856.		
	9 Prepaid expenses and deferred charges	6,206.	9	10,622.		
	10a Land, buildings, and equipment: cost or other basis. Complete Part VI of Schedule D	10a 2,618,813.				
	b Less: accumulated depreciation	10b 324,271.				
			1,754,261.	10c	2,294,542.	
	11 Investments - publicly traded securities	729,782.	11	639,472.		
	12 Investments - other securities. See Part IV, line 11		12			
	13 Investments - program-related. See Part IV, line 11		13			
	14 Intangible assets		14			
15 Other assets. See Part IV, line 11	1,745.	15	1,347.			
16 Total assets. Add lines 1 through 15 (must equal line 34)	3,918,168.	16	3,928,359.			
Liabilities	17 Accounts payable and accrued expenses	82,202.	17	83,155.		
	18 Grants payable		18			
	19 Deferred revenue		19			
	20 Tax-exempt bond liabilities		20			
	21 Escrow or custodial account liability. Complete Part IV of Schedule D	107,241.	21	151,124.		
	22 Payables to current and former officers, directors, trustees, key employees, highest compensated employees, and disqualified persons. Complete Part II of Schedule L		22			
	23 Secured mortgages and notes payable to unrelated third parties		23			
	24 Unsecured notes and loans payable to unrelated third parties		24			
	25 Other liabilities (including federal income tax, payables to related third parties, and other liabilities not included on lines 17-24). Complete Part X of Schedule D	127,106.	25	120,718.		
	26 Total liabilities. Add lines 17 through 25	316,549.	26	354,997.		
Net Assets or Fund Balances	Organizations that follow SFAS 117, check here <input checked="" type="checkbox"/> and complete lines 27 through 29, and lines 33 and 34.					
	27 Unrestricted net assets	2,732,252.	27	2,705,826.		
	28 Temporarily restricted net assets	68,530.	28	66,699.		
	29 Permanently restricted net assets	800,837.	29	800,837.		
	Organizations that do not follow SFAS 117, check here <input type="checkbox"/> and complete lines 30 through 34.					
	30 Capital stock or trust principal, or current funds		30			
	31 Paid-in or capital surplus, or land, building, or equipment fund		31			
	32 Retained earnings, endowment, accumulated income, or other funds		32			
	33 Total net assets or fund balances	3,601,619.	33	3,573,362.		
34 Total liabilities and net assets/fund balances	3,918,168.	34	3,928,359.			

Part XI Reconciliation of Net Assets

Check if Schedule O contains a response to any question in this Part XI

1	Total revenue (must equal Part VIII, column (A), line 12)	1	1,170,419.
2	Total expenses (must equal Part IX, column (A), line 25)	2	1,203,242.
3	Revenue less expenses. Subtract line 2 from line 1	3	-32,823.
4	Net assets or fund balances at beginning of year (must equal Part X, line 33, column (A))	4	3,601,619.
5	Other changes in net assets or fund balances (explain in Schedule O)	5	4,566.
6	Net assets or fund balances at end of year. Combine lines 3, 4, and 5 (must equal Part X, line 33, column (B))	6	3,573,362.

Part XII Financial Statements and Reporting

Check if Schedule O contains a response to any question in this Part XII

		Yes	No
1	Accounting method used to prepare the Form 990: <input type="checkbox"/> Cash <input checked="" type="checkbox"/> Accrual <input type="checkbox"/> Other _____ If the organization changed its method of accounting from a prior year or checked "Other," explain in Schedule O.		
2a	Were the organization's financial statements compiled or reviewed by an independent accountant?		X
2b	Were the organization's financial statements audited by an independent accountant?	X	
2c	If "Yes" to line 2a or 2b, does the organization have a committee that assumes responsibility for oversight of the audit, review, or compilation of its financial statements and selection of an independent accountant? If the organization changed either its oversight process or selection process during the tax year, explain in Schedule O.	X	
d	If "Yes" to line 2a or 2b, check a box below to indicate whether the financial statements for the year were issued on a separate basis, consolidated basis, or both: <input checked="" type="checkbox"/> Separate basis <input type="checkbox"/> Consolidated basis <input type="checkbox"/> Both consolidated and separate basis		
3a	As a result of a federal award, was the organization required to undergo an audit or audits as set forth in the Single Audit Act and OMB Circular A-133?		X
3b	If "Yes," did the organization undergo the required audit or audits? If the organization did not undergo the required audit or audits, explain why in Schedule O and describe any steps taken to undergo such audits.		

Form 990 (2011)

DRAFT

SCHEDULE A
(Form 990 or 990-EZ)

Department of the Treasury
Internal Revenue Service

Public Charity Status and Public Support

Complete if the organization is a section 501(c)(3) organization or a section 4947(a)(1) nonexempt charitable trust.

▶ Attach to Form 990 or Form 990-EZ. ▶ See separate instructions.

OMB No. 1545-0047

2011

Open to Public Inspection

Name of the organization: **THE CONSERVATION FOUNDATION**
Employer identification number: **23-7221206**

Part I Reason for Public Charity Status (All organizations must complete this part.) See instructions.

The organization is not a private foundation because it is: (For lines 1 through 11, check only one box.)

- 1 A church, convention of churches, or association of churches described in **section 170(b)(1)(A)(i).**
- 2 A school described in **section 170(b)(1)(A)(ii).** (Attach Schedule E.)
- 3 A hospital or a cooperative hospital service organization described in **section 170(b)(1)(A)(iii).**
- 4 A medical research organization operated in conjunction with a hospital described in **section 170(b)(1)(A)(iii).** Enter the hospital's name, city, and state: _____
- 5 An organization operated for the benefit of a college or university owned or operated by a governmental unit described in **section 170(b)(1)(A)(iv).** (Complete Part II.)
- 6 A federal, state, or local government or governmental unit described in **section 170(b)(1)(A)(v).**
- 7 An organization that normally receives a substantial part of its support from a governmental unit or from the general public described in **section 170(b)(1)(A)(vi).** (Complete Part II.)
- 8 A community trust described in **section 170(b)(1)(A)(vi).** (Complete Part II.)
- 9 An organization that normally receives: (1) more than 33 1/3% of its support from contributions, membership fees, and gross receipts from activities related to its exempt functions - subject to certain exceptions, and (2) no more than 33 1/3% of its support from gross investment income and unrelated business taxable income (less section 511 tax) from businesses acquired by the organization after June 30, 1975. See **section 509(a)(2).** (Complete Part III.)
- 10 An organization organized and operated exclusively to test for public safety. See **section 509(a)(4).**
- 11 An organization organized and operated exclusively for the benefit of, to perform the functions of, or to carry out the purposes of one or more publicly supported organizations described in section 509(a)(1) or section 509(a)(2). See **section 509(a)(3).** Check the box that describes the type of supporting organization and complete lines 11e through 11h.
 - a Type I
 - b Type II
 - c Type III - Functionally integrated
 - d Type III - Other
- e By checking this box, I certify that the organization is not controlled directly or indirectly by one or more disqualified persons other than foundation managers and other than one or more publicly supported organizations described in section 509(a)(1) or section 509(a)(2).
- f If the organization received a written determination from the IRS that it is a Type I, Type II, or Type III supporting organization, check this box
- g Since August 17, 2006, has the organization accepted any gift or contribution from any of the following persons?

	Yes	No
(i) A person who directly or indirectly controls, either alone or together with persons described in (ii) and (iii) below, the governing body of the supported organization?		
(ii) A family member of a person described in (i) above?		
(iii) A 35% controlled entity of a person described in (i) or (ii) above?		
- h Provide the following information about the supported organization(s).

(i) Name of supported organization	(ii) EIN	(iii) Type of organization (described on lines 1-9 above or IRC section (see instructions))	(iv) Is the organization in col. (i) listed in your governing document?		(v) Did you notify the organization in col. (i) of your support?		(vi) Is the organization in col. (i) organized in the U.S.?		(vii) Amount of support
			Yes	No	Yes	No	Yes	No	
Total									

Part II Support Schedule for Organizations Described in Sections 170(b)(1)(A)(iv) and 170(b)(1)(A)(vi)

(Complete only if you checked the box on line 5, 7, or 8 of Part I or if the organization failed to qualify under Part III. If the organization fails to qualify under the tests listed below, please complete Part III.)

Section A. Public Support

Calendar year (or fiscal year beginning in) ▶	(a) 2007	(b) 2008	(c) 2009	(d) 2010	(e) 2011	(f) Total
1 Gifts, grants, contributions, and membership fees received. (Do not include any "unusual grants.")	2205628.	1490068.	824,614.	1230916.	657,997.	6409223.
2 Tax revenues levied for the organization's benefit and either paid to or expended on its behalf						
3 The value of services or facilities furnished by a governmental unit to the organization without charge						
4 Total. Add lines 1 through 3	2205628.	1490068.	824,614.	1230916.	657,997.	6409223.
5 The portion of total contributions by each person (other than a governmental unit or publicly supported organization) included on line 1 that exceeds 2% of the amount shown on line 11, column (f)						1449522.
6 Public support. Subtract line 5 from line 4.						4959701.

Section B. Total Support

Calendar year (or fiscal year beginning in) ▶	(a) 2007	(b) 2008	(c) 2009	(d) 2010	(e) 2011	(f) Total
7 Amounts from line 4	2205628.	1490068.	824,614.	1230916.	657,997.	6409223.
8 Gross income from interest, dividends, payments received on securities loans, rents, royalties and income from similar sources	49,569.	20,079.	14,182.	11,357.	9,117.	104,304.
9 Net income from unrelated business activities, whether or not the business is regularly carried on						
10 Other income. Do not include gain or loss from the sale of capital assets (Explain in Part IV.)						
11 Total support. Add lines 7 through 10						6513527.
12 Gross receipts from related activities, etc. (see instructions)					12	1,464,621.
13 First five years. If the Form 990 is for the organization's first, second, third, fourth, or fifth tax year as a section 501(c)(3) organization, check this box and stop here	<input type="checkbox"/>					

Section C. Computation of Public Support Percentage

14 Public support percentage for 2011 (line 6, column (f) divided by line 11, column (f))	14	76.14	%
15 Public support percentage from 2010 Schedule A, Part II, line 14	15	79.54	%
16a 33 1/3% support test - 2011. If the organization did not check the box on line 13, and line 14 is 33 1/3% or more, check this box and stop here. The organization qualifies as a publicly supported organization	<input checked="" type="checkbox"/>		
b 33 1/3% support test - 2010. If the organization did not check a box on line 13 or 16a, and line 15 is 33 1/3% or more, check this box and stop here. The organization qualifies as a publicly supported organization	<input type="checkbox"/>		
17a 10% -facts-and-circumstances test - 2011. If the organization did not check a box on line 13, 16a, or 16b, and line 14 is 10% or more, and if the organization meets the "facts-and-circumstances" test, check this box and stop here. Explain in Part IV how the organization meets the "facts-and-circumstances" test. The organization qualifies as a publicly supported organization	<input type="checkbox"/>		
b 10% -facts-and-circumstances test - 2010. If the organization did not check a box on line 13, 16a, 16b, or 17a, and line 15 is 10% or more, and if the organization meets the "facts-and-circumstances" test, check this box and stop here. Explain in Part IV how the organization meets the "facts-and-circumstances" test. The organization qualifies as a publicly supported organization	<input type="checkbox"/>		
18 Private foundation. If the organization did not check a box on line 13, 16a, 16b, 17a, or 17b, check this box and see instructions	<input type="checkbox"/>		

Part III Support Schedule for Organizations Described in Section 509(a)(2)

(Complete only if you checked the box on line 9 of Part I or if the organization failed to qualify under Part II. If the organization fails to qualify under the tests listed below, please complete Part II.)

Section A. Public Support

Calendar year (or fiscal year beginning in) ►	(a) 2007	(b) 2008	(c) 2009	(d) 2010	(e) 2011	(f) Total
1 Gifts, grants, contributions, and membership fees received. (Do not include any "unusual grants.")						
2 Gross receipts from admissions, merchandise sold or services performed, or facilities furnished in any activity that is related to the organization's tax-exempt purpose						
3 Gross receipts from activities that are not an unrelated trade or business under section 513						
4 Tax revenues levied for the organization's benefit and either paid to or expended on its behalf						
5 The value of services or facilities furnished by a governmental unit to the organization without charge						
6 Total. Add lines 1 through 5						
7a Amounts included on lines 1, 2, and 3 received from disqualified persons						
b Amounts included on lines 2 and 3 received from other than disqualified persons that exceed the greater of \$5,000 or 1% of the amount on line 13 for the year						
c Add lines 7a and 7b						
8 Public support (Subtract line 7c from line 6.)						

Section B. Total Support

Calendar year (or fiscal year beginning in) ►	(a) 2007	(b) 2008	(c) 2009	(d) 2010	(e) 2011	(f) Total
9 Amounts from line 6						
10a Gross income from interest, dividends, payments received on securities loans, rents, royalties and income from similar sources						
b Unrelated business taxable income (less section 511 taxes) from businesses acquired after June 30, 1975						
c Add lines 10a and 10b						
11 Net income from unrelated business activities not included in line 10b, whether or not the business is regularly carried on						
12 Other income. Do not include gain or loss from the sale of capital assets (Explain in Part IV.)						
13 Total support (Add lines 9, 10c, 11, and 12.)						

14 First five years. If the Form 990 is for the organization's first, second, third, fourth, or fifth tax year as a section 501(c)(3) organization, check this box and **stop here**

Section C. Computation of Public Support Percentage

15 Public support percentage for 2011 (line 8, column (f) divided by line 13, column (f))	15	%
16 Public support percentage from 2010 Schedule A, Part III, line 15	16	%

Section D. Computation of Investment Income Percentage

17 Investment income percentage for 2011 (line 10c, column (f) divided by line 13, column (f))	17	%
18 Investment income percentage from 2010 Schedule A, Part III, line 17	18	%

19a 33 1/3% support tests - 2011. If the organization did not check the box on line 14, and line 15 is more than 33 1/3%, and line 17 is not more than 33 1/3%, check this box and **stop here**. The organization qualifies as a publicly supported organization

b 33 1/3% support tests - 2010. If the organization did not check a box on line 14 or line 19a, and line 16 is more than 33 1/3%, and line 18 is not more than 33 1/3%, check this box and **stop here**. The organization qualifies as a publicly supported organization

20 Private foundation. If the organization did not check a box on line 14, 19a, or 19b, check this box and see instructions

Schedule A Identification of Excess Contributions Included on Part II, Line 5 2011

**** Do Not File ****
***** Not Open to Public Inspection *****

Contributor's Name	Total Contributions	Excess Contributions
MRS. BETTY BRADSHAW	900,277.	770,006.
MR & MRS. STEVE & LIZ VAN ARSDELL	143,600.	13,329.
DONNELLEY FOUNDATION	555,000.	424,729.
HAMILL FAMILY FOUNDATION	330,000.	199,729.
TELLABS FOUNDATION	172,000.	41,729.

DRAFT

Total Excess Contributions to Schedule A, Part II, Line 5 **1,449,522.**

Schedule B
(Form 990, 990-EZ,
or 990-PF)

Department of the Treasury
Internal Revenue Service

Schedule of Contributors

▶ Attach to Form 990, Form 990-EZ, or Form 990-PF.

OMB No. 1545-0047

2011

Name of the organization

THE CONSERVATION FOUNDATION

Employer identification number

23-7221206

Organization type (check one):

Filers of:

Section:

Form 990 or 990-EZ

501(c)(3) (enter number) organization

4947(a)(1) nonexempt charitable trust **not** treated as a private foundation

527 political organization

Form 990-PF

501(c)(3) exempt private foundation

4947(a)(1) nonexempt charitable trust treated as a private foundation

501(c)(3) taxable private foundation

Check if your organization is covered by the **General Rule** or a **Special Rule**.

Note. Only a section 501(c)(7), (8), or (10) organization can check boxes for both the General Rule and a Special Rule. See instructions.

General Rule

For an organization filing Form 990, 990-EZ, or 990-PF that received, during the year, \$5,000 or more (in money or property) from any one contributor. Complete Parts I and II.

Special Rules

For a section 501(c)(3) organization filing Form 990 or 990-EZ that met the 33 1/3% support test of the regulations under sections 509(a)(1) and 170(b)(1)(A)(vi) and received from any one contributor, during the year, a contribution of the greater of (1) \$5,000 or (2) 2% of the amount on (i) Form 990, Part VIII, line 1h, or (ii) Form 990-EZ, line 1. Complete Parts I and II.

For a section 501(c)(7), (8), or (10) organization filing Form 990 or 990-EZ that received from any one contributor, during the year, total contributions of more than \$1,000 for use *exclusively* for religious, charitable, scientific, literary, or educational purposes, or the prevention of cruelty to children or animals. Complete Parts I, II, and III.

For a section 501(c)(7), (8), or (10) organization filing Form 990 or 990-EZ that received from any one contributor, during the year, contributions for use *exclusively* for religious, charitable, etc., purposes, but these contributions did not total to more than \$1,000. If this box is checked, enter here the total contributions that were received during the year for an *exclusively* religious, charitable, etc., purpose. Do not complete any of the parts unless the **General Rule** applies to this organization because it received nonexclusively religious, charitable, etc., contributions of \$5,000 or more during the year. ▶ \$ _____

Caution. An organization that is not covered by the General Rule and/or the Special Rules does not file Schedule B (Form 990, 990-EZ, or 990-PF), but it **must** answer "No" on Part IV, line 2, of its Form 990; or check the box on line H of its Form 990-EZ or on Part I, line 2 of its Form 990-PF, to certify that it does not meet the filing requirements of Schedule B (Form 990, 990-EZ, or 990-PF).

LHA For Paperwork Reduction Act Notice, see the Instructions for Form 990, 990-EZ, or 990-PF. Schedule B (Form 990, 990-EZ, or 990-PF) (2011)

Name of organization THE CONSERVATION FOUNDATION	Employer identification number 23-7221206
--	---

Part I Contributors (see instructions). Use duplicate copies of Part I if additional space is needed.

(a) No.	(b) Name, address, and ZIP + 4	(c) Total contributions	(d) Type of contribution
1	CHRISTOPHER B. BURKE ENGINEERING, LTD. 9575 W. HIGGINS RD, SUITE 600 ROSEMONT, IL 60018	\$ 26,700.	Person <input checked="" type="checkbox"/> Payroll <input type="checkbox"/> Noncash <input type="checkbox"/> (Complete Part II if there is a noncash contribution.)
2	MRS. & MR. JANET & JAMES D'AMBROSIO 760 CRESCENT BLVD. GLEN ELLYN, IL 60137	\$ 14,050.	Person <input checked="" type="checkbox"/> Payroll <input type="checkbox"/> Noncash <input type="checkbox"/> (Complete Part II if there is a noncash contribution.)
3	DUPAGE COMMUNITY FOUNDATION 104 E. ROOSEVELT ROAD WHEATON, IL 60187	\$ 17,000.	Person <input checked="" type="checkbox"/> Payroll <input type="checkbox"/> Noncash <input type="checkbox"/> (Complete Part II if there is a noncash contribution.)
4	HAMILL FAMILY FOUNDATION 200 W. MADISON STREET, STE 3400 CHICAGO, IL 60606	\$ 20,000.	Person <input checked="" type="checkbox"/> Payroll <input type="checkbox"/> Noncash <input type="checkbox"/> (Complete Part II if there is a noncash contribution.)
5	ILLINOIS CLEAN ENERGY COMM. FOUNDATION 2 N. LASALLE ST., SUITE 950 CHICAGO, IL 60602	\$ 40,000.	Person <input checked="" type="checkbox"/> Payroll <input type="checkbox"/> Noncash <input type="checkbox"/> (Complete Part II if there is a noncash contribution.)
6	MOLEX, INC. 2222 WELLINGTON CT. LISLE, IL 60532	\$ 30,000.	Person <input checked="" type="checkbox"/> Payroll <input type="checkbox"/> Noncash <input type="checkbox"/> (Complete Part II if there is a noncash contribution.)

Name of organization THE CONSERVATION FOUNDATION	Employer identification number 23-7221206
--	---

Part I Contributors (see instructions). Use duplicate copies of Part I if additional space is needed.

(a) No.	(b) Name, address, and ZIP + 4	(c) Total contributions	(d) Type of contribution
7	<u>MR. & MRS. STEVE & LIZ VAN ARSDELL</u> <u>23W620 HEMLOCK LANE</u> <u>NAPERVILLE, IL 60540</u>	\$ <u>21,000.</u>	Person <input checked="" type="checkbox"/> Payroll <input type="checkbox"/> Noncash <input type="checkbox"/> (Complete Part II if there is a noncash contribution.)
8	<u>KAY STEPHENS</u> <u>620 BERRY COURT</u> <u>NAPERVILLE, IL 60540</u>	\$ <u>225,000.</u>	Person <input type="checkbox"/> Payroll <input type="checkbox"/> Noncash <input checked="" type="checkbox"/> (Complete Part II if there is a noncash contribution.)
_____	_____	\$ _____	Person <input type="checkbox"/> Payroll <input type="checkbox"/> Noncash <input type="checkbox"/> (Complete Part II if there is a noncash contribution.)
_____	_____	\$ _____	Person <input type="checkbox"/> Payroll <input type="checkbox"/> Noncash <input type="checkbox"/> (Complete Part II if there is a noncash contribution.)
_____	_____	\$ _____	Person <input type="checkbox"/> Payroll <input type="checkbox"/> Noncash <input type="checkbox"/> (Complete Part II if there is a noncash contribution.)
_____	_____	\$ _____	Person <input type="checkbox"/> Payroll <input type="checkbox"/> Noncash <input type="checkbox"/> (Complete Part II if there is a noncash contribution.)
_____	_____	\$ _____	Person <input type="checkbox"/> Payroll <input type="checkbox"/> Noncash <input type="checkbox"/> (Complete Part II if there is a noncash contribution.)

Name of organization THE CONSERVATION FOUNDATION	Employer identification number 23-7221206
--	---

Part II Noncash Property (see instructions). Use duplicate copies of Part II if additional space is needed.

(a) No. from Part I	(b) Description of noncash property given	(c) FMV (or estimate) (see instructions)	(d) Date received
8	LAND _____ _____ _____	\$ 225,000.	10/11/11
_____	_____ _____ _____	\$ _____	_____
_____	_____ _____ _____	\$ _____	_____
_____	_____ _____ _____	\$ _____	_____
_____	_____ _____ _____	\$ _____	_____
_____	_____ _____ _____	\$ _____	_____
_____	_____ _____ _____	\$ _____	_____

Name of organization THE CONSERVATION FOUNDATION	Employer identification number 23-7221206
--	---

Part III Exclusively religious, charitable, etc., individual contributions to section 501(c)(7), (8), or (10) organizations that total more than \$1,000 for the year. Complete columns (a) through (e) and the following line entry. For organizations completing Part III, enter the total of exclusively religious, charitable, etc., contributions of \$1,000 or less for the year. (Enter this information once.) ▶ \$ _____
Use duplicate copies of Part III if additional space is needed.

(a) No. from Part I	(b) Purpose of gift	(c) Use of gift	(d) Description of how gift is held
(e) Transfer of gift			
Transferee's name, address, and ZIP + 4		Relationship of transferor to transferee	
(e) Transfer of gift			
Transferee's name, address, and ZIP + 4		Relationship of transferor to transferee	
(e) Transfer of gift			
Transferee's name, address, and ZIP + 4		Relationship of transferor to transferee	
(e) Transfer of gift			
Transferee's name, address, and ZIP + 4		Relationship of transferor to transferee	
(e) Transfer of gift			
Transferee's name, address, and ZIP + 4		Relationship of transferor to transferee	
(e) Transfer of gift			
Transferee's name, address, and ZIP + 4		Relationship of transferor to transferee	

SCHEDULE C
(Form 990 or 990-EZ)

Political Campaign and Lobbying Activities

OMB No. 1545-0047

For Organizations Exempt From Income Tax Under section 501(c) and section 527

2011

Department of the Treasury
Internal Revenue Service

▶ **Complete if the organization is described below.** ▶ **Attach to Form 990 or Form 990-EZ.**

Open to Public Inspection

▶ **See separate instructions.**

If the organization answered "Yes" to Form 990, Part IV, line 3, or Form 990-EZ, Part V, line 46 (Political Campaign Activities), then

- Section 501(c)(3) organizations: Complete Parts I-A and B. Do not complete Part I-C.
- Section 501(c) (other than section 501(c)(3)) organizations: Complete Parts I-A and C below. Do not complete Part I-B.
- Section 527 organizations: Complete Part I-A only.

If the organization answered "Yes" to Form 990, Part IV, line 4, or Form 990-EZ, Part VI, line 47 (Lobbying Activities), then

- Section 501(c)(3) organizations that have filed Form 5768 (election under section 501(h)): Complete Part II-A. Do not complete Part II-B.
- Section 501(c)(3) organizations that have NOT filed Form 5768 (election under section 501(h)): Complete Part II-B. Do not complete Part II-A.

If the organization answered "Yes" to Form 990, Part IV, line 5 (Proxy Tax), or Form 990-EZ, Part V, line 35c (Proxy Tax), then

- Section 501(c)(4), (5), or (6) organizations: Complete Part III.

Name of organization THE CONSERVATION FOUNDATION	Employer identification number 23-7221206
--	---

Part I-A Complete if the organization is exempt under section 501(c) or is a section 527 organization.

- 1 Provide a description of the organization's direct and indirect political campaign activities in Part IV.
- 2 Political expenditures ▶ \$ _____
- 3 Volunteer hours _____

Part I-B Complete if the organization is exempt under section 501(c)(3).

- 1 Enter the amount of any excise tax incurred by the organization under section 4955 ▶ \$ _____
- 2 Enter the amount of any excise tax incurred by organization managers under section 4955 ▶ \$ _____
- 3 If the organization incurred a section 4955 tax, did it file Form 4720 for this year? Yes No
- 4a Was a correction made? Yes No
- b If "Yes," describe in Part IV.

Part I-C Complete if the organization is exempt under section 501(c), except section 501(c)(3).

- 1 Enter the amount directly expended by the filing organization for section 527 exempt function activities ▶ \$ _____
- 2 Enter the amount of the filing organization's funds contributed to other organizations for section 527 exempt function activities ▶ \$ _____
- 3 Total exempt function expenditures. Add lines 1 and 2. Enter here and on Form 1120-POL, line 17b ▶ \$ _____
- 4 Did the filing organization file **Form 1120-POL** for this year? Yes No
- 5 Enter the names, addresses and employer identification number (EIN) of all section 527 political organizations to which the filing organization made payments. For each organization listed, enter the amount paid from the filing organization's funds. Also enter the amount of political contributions received that were promptly and directly delivered to a separate political organization, such as a separate segregated fund or a political action committee (PAC). If additional space is needed, provide information in Part IV.

(a) Name	(b) Address	(c) EIN	(d) Amount paid from filing organization's funds. If none, enter -0-.	(e) Amount of political contributions received and promptly and directly delivered to a separate political organization. If none, enter -0-.

For Paperwork Reduction Act Notice, see the Instructions for Form 990 or 990-EZ. Schedule C (Form 990 or 990-EZ) 2011

Part II-A Complete if the organization is exempt under section 501(c)(3) and filed Form 5768 (election under section 501(h)).

- A** Check if the filing organization belongs to an affiliated group (and list in Part IV each affiliated group member's name, address, EIN, expenses, and share of excess lobbying expenditures).
- B** Check if the filing organization checked box A and "limited control" provisions apply.

Limits on Lobbying Expenditures (The term "expenditures" means amounts paid or incurred.)		(a) Filing organization's totals	(b) Affiliated group totals												
1 a	Total lobbying expenditures to influence public opinion (grass roots lobbying)	0.													
b	Total lobbying expenditures to influence a legislative body (direct lobbying)	0.													
c	Total lobbying expenditures (add lines 1a and 1b)	0.													
d	Other exempt purpose expenditures	1,230,242.													
e	Total exempt purpose expenditures (add lines 1c and 1d)	1,230,242.													
f	Lobbying nontaxable amount. Enter the amount from the following table in both columns.	198,024.													
<table border="1" style="width: 100%; border-collapse: collapse;"> <thead> <tr> <th style="text-align: left;">If the amount on line 1e, column (a) or (b) is:</th> <th style="text-align: left;">The lobbying nontaxable amount is:</th> </tr> </thead> <tbody> <tr> <td>Not over \$500,000</td> <td>20% of the amount on line 1e.</td> </tr> <tr> <td>Over \$500,000 but not over \$1,000,000</td> <td>\$100,000 plus 15% of the excess over \$500,000.</td> </tr> <tr> <td>Over \$1,000,000 but not over \$1,500,000</td> <td>\$175,000 plus 10% of the excess over \$1,000,000.</td> </tr> <tr> <td>Over \$1,500,000 but not over \$17,000,000</td> <td>\$225,000 plus 5% of the excess over \$1,500,000.</td> </tr> <tr> <td>Over \$17,000,000</td> <td>\$1,000,000.</td> </tr> </tbody> </table>		If the amount on line 1e, column (a) or (b) is:	The lobbying nontaxable amount is:	Not over \$500,000	20% of the amount on line 1e.	Over \$500,000 but not over \$1,000,000	\$100,000 plus 15% of the excess over \$500,000.	Over \$1,000,000 but not over \$1,500,000	\$175,000 plus 10% of the excess over \$1,000,000.	Over \$1,500,000 but not over \$17,000,000	\$225,000 plus 5% of the excess over \$1,500,000.	Over \$17,000,000	\$1,000,000.		
If the amount on line 1e, column (a) or (b) is:	The lobbying nontaxable amount is:														
Not over \$500,000	20% of the amount on line 1e.														
Over \$500,000 but not over \$1,000,000	\$100,000 plus 15% of the excess over \$500,000.														
Over \$1,000,000 but not over \$1,500,000	\$175,000 plus 10% of the excess over \$1,000,000.														
Over \$1,500,000 but not over \$17,000,000	\$225,000 plus 5% of the excess over \$1,500,000.														
Over \$17,000,000	\$1,000,000.														
g	Grassroots nontaxable amount (enter 25% of line 1f)	49,506.													
h	Subtract line 1g from line 1a. If zero or less, enter -0-	0.													
i	Subtract line 1f from line 1c. If zero or less, enter -0-	0.													
j	If there is an amount other than zero on either line 1h or line 1i, did the organization file Form 4720 reporting section 4911 tax for this year?		<input type="checkbox"/> Yes <input type="checkbox"/> No												

4-Year Averaging Period Under Section 501(h)
(Some organizations that made a section 501(h) election do not have to complete all of the five columns below. See the instructions for lines 2a through 2f on page 4.)

Lobbying Expenditures During 4-Year Averaging Period					
Calendar year (or fiscal year beginning in)	(a) 2008	(b) 2009	(c) 2010	(d) 2011	(e) Total
2a Lobbying nontaxable amount	230,328.	204,998.	239,381.	198,024.	872,731.
b Lobbying ceiling amount (150% of line 2a, column(e))					1,309,097.
c Total lobbying expenditures	0.	0.	0.		
d Grassroots nontaxable amount	57,582.	51,249.	59,845.	49,506.	218,182.
e Grassroots ceiling amount (150% of line 2d, column (e))					327,273.
f Grassroots lobbying expenditures	0.	0.	0.		

Part II-B Complete if the organization is exempt under section 501(c)(3) and has NOT filed Form 5768 (election under section 501(h)).

For each "Yes" response to lines 1a through 1i below, provide in Part IV a detailed description of the lobbying activity.	(a)		(b)
	Yes	No	Amount
1 During the year, did the filing organization attempt to influence foreign, national, state or local legislation, including any attempt to influence public opinion on a legislative matter or referendum, through the use of:			
a Volunteers?			
b Paid staff or management (include compensation in expenses reported on lines 1c through 1i)? ..			
c Media advertisements?			
d Mailings to members, legislators, or the public?			
e Publications, or published or broadcast statements?			
f Grants to other organizations for lobbying purposes?			
g Direct contact with legislators, their staffs, government officials, or a legislative body?			
h Rallies, demonstrations, seminars, conventions, speeches, lectures, or any similar means?			
i Other activities?			
j Total. Add lines 1c through 1i			
2a Did the activities in line 1 cause the organization to be not described in section 501(c)(3)?			
b If "Yes," enter the amount of any tax incurred under section 4912			
c If "Yes," enter the amount of any tax incurred by organization managers under section 4912			
d If the filing organization incurred a section 4912 tax, did it file Form 4720 for this year?			

Part III-A Complete if the organization is exempt under section 501(c)(4), section 501(c)(5), or section 501(c)(6).

	Yes	No
1 Were substantially all (90% or more) dues received nondeductible by members?	1	
2 Did the organization make only in-house lobbying expenditures of \$2,000 or less?	2	
3 Did the organization agree to carry over lobbying and political expenditures from the prior year?	3	

Part III-B Complete if the organization is exempt under section 501(c)(4), section 501(c)(5), or section 501(c)(6) and if either (a) BOTH Part III-A, lines 1 and 2, are answered "No" OR (b) Part III-A, line 3, is answered "Yes."

1 Dues, assessments and similar amounts from members	1	
2 Section 162(e) nondeductible lobbying and political expenditures (do not include amounts of political expenses for which the section 527(f) tax was paid).		
a Current year	2a	
b Carryover from last year	2b	
c Total	2c	
3 Aggregate amount reported in section 6033(e)(1)(A) notices of nondeductible section 162(e) dues	3	
4 If notices were sent and the amount on line 2c exceeds the amount on line 3, what portion of the excess does the organization agree to carryover to the reasonable estimate of nondeductible lobbying and political expenditure next year?	4	
5 Taxable amount of lobbying and political expenditures (see instructions)	5	

Part IV Supplemental Information

Complete this part to provide the descriptions required for Part I-A, line 1; Part I-B, line 4; Part I-C, line 5; Part II-A; and Part II-B, line 1. Also, complete this part for any additional information.

SCHEDULE D
(Form 990)

Department of the Treasury
Internal Revenue Service

Supplemental Financial Statements

▶ Complete if the organization answered "Yes," to Form 990, Part IV, line 6, 7, 8, 9, 10, 11a, 11b, 11c, 11d, 11e, 11f, 12a, or 12b.

▶ Attach to Form 990. ▶ See separate instructions.

OMB No. 1545-0047

2011

Open to Public Inspection

Name of the organization

THE CONSERVATION FOUNDATION

Employer identification number

23-7221206

Part I Organizations Maintaining Donor Advised Funds or Other Similar Funds or Accounts. Complete if the organization answered "Yes" to Form 990, Part IV, line 6.

	(a) Donor advised funds	(b) Funds and other accounts
1 Total number at end of year		
2 Aggregate contributions to (during year)		
3 Aggregate grants from (during year)		
4 Aggregate value at end of year		
5 Did the organization inform all donors and donor advisors in writing that the assets held in donor advised funds are the organization's property, subject to the organization's exclusive legal control?		<input type="checkbox"/> Yes <input type="checkbox"/> No
6 Did the organization inform all grantees, donors, and donor advisors in writing that grant funds can be used only for charitable purposes and not for the benefit of the donor or donor advisor, or for any other purpose conferring impermissible private benefit?		<input type="checkbox"/> Yes <input type="checkbox"/> No

Part II Conservation Easements. Complete if the organization answered "Yes" to Form 990, Part IV, line 7.

1 Purpose(s) of conservation easements held by the organization (check all that apply).

Preservation of land for public use (e.g., recreation or education) Preservation of an historically important land area

Protection of natural habitat Preservation of a certified historic structure

Preservation of open space

2 Complete lines 2a through 2d if the organization held a qualified conservation contribution in the form of a conservation easement on the last day of the tax year.

	Held at the End of the Tax Year
a Total number of conservation easements	2a 34
b Total acreage restricted by conservation easements	2b 1,255.00
c Number of conservation easements on a certified historic structure included in (a)	2c
d Number of conservation easements included in (c) acquired after 8/17/06, and not on a historic structure listed in the National Register	2d

3 Number of conservation easements modified, transferred, released, extinguished, or terminated by the organization during the tax year ▶ _____

4 Number of states where property subject to conservation easement is located ▶ 1

5 Does the organization have a written policy regarding the periodic monitoring, inspection, handling of violations, and enforcement of the conservation easements it holds?

Yes No

6 Staff and volunteer hours devoted to monitoring, inspecting, and enforcing conservation easements during the year ▶ 128

7 Amount of expenses incurred in monitoring, inspecting, and enforcing conservation easements during the year ▶ \$ 6,695.

8 Does each conservation easement reported on line 2(d) above satisfy the requirements of section 170(h)(4)(B)(i) and section 170(h)(4)(B)(ii)?

Yes No

9 In Part XIV, describe how the organization reports conservation easements in its revenue and expense statement, and balance sheet, and include, if applicable, the text of the footnote to the organization's financial statements that describes the organization's accounting for conservation easements.

Part III Organizations Maintaining Collections of Art, Historical Treasures, or Other Similar Assets.

Complete if the organization answered "Yes" to Form 990, Part IV, line 8.

1a If the organization elected, as permitted under SFAS 116 (ASC 958), not to report in its revenue statement and balance sheet works of art, historical treasures, or other similar assets held for public exhibition, education, or research in furtherance of public service, provide, in Part XIV, the text of the footnote to its financial statements that describes these items.

b If the organization elected, as permitted under SFAS 116 (ASC 958), to report in its revenue statement and balance sheet works of art, historical treasures, or other similar assets held for public exhibition, education, or research in furtherance of public service, provide the following amounts relating to these items:

(i) Revenues included in Form 990, Part VIII, line 1

▶ \$ _____

(ii) Assets included in Form 990, Part X

▶ \$ _____

2 If the organization received or held works of art, historical treasures, or other similar assets for financial gain, provide the following amounts required to be reported under SFAS 116 (ASC 958) relating to these items:

a Revenues included in Form 990, Part VIII, line 1

▶ \$ _____

b Assets included in Form 990, Part X

▶ \$ _____

Part III Organizations Maintaining Collections of Art, Historical Treasures, or Other Similar Assets (continued)

- 3 Using the organization's acquisition, accession, and other records, check any of the following that are a significant use of its collection items (check all that apply):
- a Public exhibition
 - b Scholarly research
 - c Preservation for future generations
 - d Loan or exchange programs
 - e Other _____
- 4 Provide a description of the organization's collections and explain how they further the organization's exempt purpose in Part XIV.
- 5 During the year, did the organization solicit or receive donations of art, historical treasures, or other similar assets to be sold to raise funds rather than to be maintained as part of the organization's collection? Yes No

Part IV Escrow and Custodial Arrangements. Complete if the organization answered "Yes" to Form 990, Part IV, line 9, or reported an amount on Form 990, Part X, line 21.

- 1a Is the organization an agent, trustee, custodian or other intermediary for contributions or other assets not included on Form 990, Part X? Yes No
- b If "Yes," explain the arrangement in Part XIV and complete the following table:
- | | Amount |
|---------------------------------|--------|
| c Beginning balance | 1c |
| d Additions during the year | 1d |
| e Distributions during the year | 1e |
| f Ending balance | 1f |
- 2a Did the organization include an amount on Form 990, Part X, line 21? Yes No
- b If "Yes," explain the arrangement in Part XIV.

Part V Endowment Funds. Complete if the organization answered "Yes" to Form 990, Part IV, line 10.

	(a) Current year	(b) Prior year	(c) Two years back	(d) Three years back	(e) Four years back
1a Beginning of year balance					
b Contributions					
c Net investment earnings, gains, and losses					
d Grants or scholarships					
e Other expenditures for facilities and programs					
f Administrative expenses					
g End of year balance					

- 2 Provide the estimated percentage of the current year end balance (line 1g, column (a)) held as:
- a Board designated or quasi-endowment %
 - b Permanent endowment %
 - c Temporarily restricted endowment %
- The percentages in lines 2a, 2b, and 2c should equal 100%.

- 3a Are there endowment funds not in the possession of the organization that are held and administered for the organization by:
- | | Yes | No |
|---|--------|----|
| (i) unrelated organizations | 3a(i) | |
| (ii) related organizations | 3a(ii) | |
| b If "Yes" to 3a(ii), are the related organizations listed as required on Schedule R? | 3b | |

4 Describe in Part XIV the intended uses of the organization's endowment funds.

Part VI Land, Buildings, and Equipment. See Form 990, Part X, line 10.

Description of property	(a) Cost or other basis (investment)	(b) Cost or other basis (other)	(c) Accumulated depreciation	(d) Book value
1a Land		1,435,738.		1,435,738.
b Buildings		1,117,419.	272,382.	845,037.
c Leasehold improvements				
d Equipment		65,656.	51,889.	13,767.
e Other				
Total. Add lines 1a through 1e. (Column (d) must equal Form 990, Part X, column (B), line 10(c).)				2,294,542.

Part VII Investments - Other Securities. See Form 990, Part X, line 12.

(a) Description of security or category (including name of security)	(b) Book value	(c) Method of valuation: Cost or end-of-year market value
(1) Financial derivatives		
(2) Closely-held equity interests		
(3) Other		
(A)		
(B)		
(C)		
(D)		
(E)		
(F)		
(G)		
(H)		
(I)		
Total. (Col (b) must equal Form 990, Part X, col (B) line 12.) ▶		

Part VIII Investments - Program Related. See Form 990, Part X, line 13.

(a) Description of investment type	(b) Book value	(c) Method of valuation: Cost or end-of-year market value
(1)		
(2)		
(3)		
(4)		
(5)		
(6)		
(7)		
(8)		
(9)		
(10)		
Total. (Col (b) must equal Form 990, Part X, col (B) line 13.) ▶		

Part IX Other Assets. See Form 990, Part X, line 15.

(a) Description	(b) Book value
(1)	
(2)	
(3)	
(4)	
(5)	
(6)	
(7)	
(8)	
(9)	
(10)	
Total. (Column (b) must equal Form 990, Part X, col (B) line 15.) ▶	

Part X Other Liabilities. See Form 990, Part X, line 25.

1. (a) Description of liability	(b) Book value
(1) Federal income taxes	
(2) RENTAL SECURITY DEPOSIT	1,000.
(3) MITIGATION FUNDS	119,718.
(4)	
(5)	
(6)	
(7)	
(8)	
(9)	
(10)	
(11)	
Total. (Column (b) must equal Form 990, Part X, col (B) line 25.) ▶	120,718.

2. FIN 48 (ASC 740) Footnote. In Part XIV, provide the text of the footnote to the organization's financial statements that reports the organization's liability for uncertain tax positions under FIN 48 (ASC 740).

Part XI Reconciliation of Change in Net Assets from Form 990 to Audited Financial Statements

1	Total revenue (Form 990, Part VIII, column (A), line 12)	1	1,170,419.
2	Total expenses (Form 990, Part IX, column (A), line 25)	2	1,203,242.
3	Excess or (deficit) for the year. Subtract line 2 from line 1	3	-32,823.
4	Net unrealized gains (losses) on investments	4	4,566.
5	Donated services and use of facilities	5	
6	Investment expenses	6	
7	Prior period adjustments	7	
8	Other (Describe in Part XIV.)	8	
9	Total adjustments (net). Add lines 4 through 8	9	4,566.
10	Excess or (deficit) for the year per audited financial statements. Combine lines 3 and 9	10	-28,257.

Part XII Reconciliation of Revenue per Audited Financial Statements With Revenue per Return

1	Total revenue, gains, and other support per audited financial statements	1	1,183,629.
2	Amounts included on line 1 but not on Form 990, Part VIII, line 12:		
a	Net unrealized gains on investments	2a	4,566.
b	Donated services and use of facilities	2b	
c	Recoveries of prior year grants	2c	
d	Other (Describe in Part XIV.)	2d	
e	Add lines 2a through 2d	2e	4,566.
3	Subtract line 2e from line 1	3	1,179,063.
4	Amounts included on Form 990, Part VIII, line 12, but not on line 1:		
a	Investment expenses not included on Form 990, Part VIII, line 7b	4a	
b	Other (Describe in Part XIV.)	4b	-8,644.
c	Add lines 4a and 4b	4c	-8,644.
5	Total revenue. Add lines 3 and 4c. (This must equal Form 990, Part I, line 12.)	5	1,170,419.

Part XIII Reconciliation of Expenses per Audited Financial Statements With Expenses per Return

1	Total expenses and losses per audited financial statements	1	1,211,886.
2	Amounts included on line 1 but not on Form 990, Part IX, line 25:		
a	Donated services and use of facilities	2a	
b	Prior year adjustments	2b	
c	Other losses	2c	
d	Other (Describe in Part XIV.)	2d	8,644.
e	Add lines 2a through 2d	2e	8,644.
3	Subtract line 2e from line 1	3	1,203,242.
4	Amounts included on Form 990, Part IX, line 25, but not on line 1:		
a	Investment expenses not included on Form 990, Part VIII, line 7b	4a	
b	Other (Describe in Part XIV.)	4b	
c	Add lines 4a and 4b	4c	0.
5	Total expenses. Add lines 3 and 4c. (This must equal Form 990, Part I, line 18.)	5	1,203,242.

Part XIV Supplemental Information

Complete this part to provide the descriptions required for Part II, lines 3, 5, and 9; Part III, lines 1a and 4; Part IV, lines 1b and 2b; Part V, line 4; Part X, line 2; Part XI, line 8; Part XII, lines 2d and 4b; and Part XIII, lines 2d and 4b. Also complete this part to provide any additional information.

PART II, LINE 9: THE FOUNDATION HOLDS CONSERVATION EASEMENTS PLACED ON

PROPERTIES ACCEPTABLE TO THE FOUNDATION. AT JUNE 30, 2012 AND 2011, RESPECTIVELY, 34 SUCH EASEMENTS WERE HELD. NO VALUE HAS BEEN ASSIGNED TO THESE EASEMENTS IN THE FINANCIAL STATEMENTS BECAUSE THE FOUNDATION DOES NOT HAVE OWNERSHIP RIGHTS TO THE UNDERLYING PROPERTY.

PART IV, LINE 2B: THE ORGANIZATION HAS CONTRACTS WITH SMALL CONSERVATION-MINDED ORGANIZATIONS TO PROCESS THEIR FINANCIAL TRANSACTIONS.

Part XIV Supplemental Information (continued)

THE ORGANIZATION AIDS THESE ORGANIZATIONS BY PROVIDING FINANCIAL SERVICES AND MENTORING THEM IN THIS AREA AS WELL AS IN THEIR MISSION.

PART XII, LINE 4B - OTHER ADJUSTMENTS:

FUNDRAISING EXPENSES -8,644.

PART XIII, LINE 2D - OTHER ADJUSTMENTS:

FUNDRAISING EXPENSES 8,644.



SCHEDULE G
(Form 990 or 990-EZ)

Department of the Treasury
Internal Revenue Service

**Supplemental Information Regarding
Fundraising or Gaming Activities**

**Complete if the organization answered "Yes" to Form 990, Part IV, lines 17, 18, or 19,
or if the organization entered more than \$15,000 on Form 990-EZ, line 6a.**
▶ Attach to Form 990 or Form 990-EZ. ▶ See separate instructions.

OMB No. 1545-0047

2011

Open To Public
Inspection

Name of the organization
THE CONSERVATION FOUNDATION

Employer identification number
23-7221206

Part I Fundraising Activities. Complete if the organization answered "Yes" to Form 990, Part IV, line 17. Form 990-EZ filers are not required to complete this part.

- 1** Indicate whether the organization raised funds through any of the following activities. Check all that apply.
- a Mail solicitations
 - b Internet and email solicitations
 - c Phone solicitations
 - d In-person solicitations
 - e Solicitation of non-government grants
 - f Solicitation of government grants
 - g Special fundraising events
- 2 a** Did the organization have a written or oral agreement with any individual (including officers, directors, trustees or key employees listed in Form 990, Part VII) or entity in connection with professional fundraising services? Yes No
- b** If "Yes," list the ten highest paid individuals or entities (fundraisers) pursuant to agreements under which the fundraiser is to be compensated at least \$5,000 by the organization.

(i) Name and address of individual or entity (fundraiser)	(ii) Activity	(iii) Did fundraiser have custody or control of contributions?		(iv) Gross receipts from activity	(v) Amount paid to (or retained by) fundraiser listed in col. (i)	(vi) Amount paid to (or retained by) organization
		Yes	No			
Total						

3 List all states in which the organization is registered or licensed to solicit contributions or has been notified it is exempt from registration or licensing.

Part II Fundraising Events. Complete if the organization answered "Yes" to Form 990, Part IV, line 18, or reported more than \$15,000 of fundraising event contributions and gross income on Form 990-EZ, lines 1 and 6b. List events with gross receipts greater than \$5,000.

		(a) Event #1	(b) Event #2	(c) Other events	(d) Total events (add col. (a) through col. (c))
		BENEFIT DINNER (event type)	CHASE THE MOON (event type)	NONE (total number)	
Revenue	1 Gross receipts	134,490.	21,761.		156,251.
	2 Less: Charitable contributions				
	3 Gross income (line 1 minus line 2)	134,490.	21,761.		156,251.
Direct Expenses	4 Cash prizes	1,150.			1,150.
	5 Noncash prizes				
	6 Rent/facility costs				
	7 Food and beverages				
	8 Entertainment				
	9 Other direct expenses	64,523.	8,644.		73,167.
	10 Direct expense summary. Add lines 4 through 9 in column (d)				(74,317)
	11 Net income summary. Combine line 3, column (d), and line 10				81,934.

Part III Gaming. Complete if the organization answered "Yes" to Form 990, Part IV, line 19, or reported more than \$15,000 on Form 990-EZ, line 6a.

		(a) Bingo	(b) Pull tabs/instant bingo/progressive bingo	(c) Other gaming	(d) Total gaming (add col. (a) through col. (c))
Revenue	1 Gross revenue				
Direct Expenses	2 Cash prizes				
	3 Noncash prizes				
	4 Rent/facility costs				
	5 Other direct expenses				
	6 Volunteer labor	<input type="checkbox"/> Yes _____ % <input type="checkbox"/> No	<input type="checkbox"/> Yes _____ % <input type="checkbox"/> No	<input type="checkbox"/> Yes _____ % <input type="checkbox"/> No	
	7 Direct expense summary. Add lines 2 through 5 in column (d)				()
	8 Net gaming income summary. Combine line 1, column d, and line 7				

9 Enter the state(s) in which the organization operates gaming activities: _____
a Is the organization licensed to operate gaming activities in each of these states? Yes No
b If "No," explain: _____

10a Were any of the organization's gaming licenses revoked, suspended or terminated during the tax year? Yes No
b If "Yes," explain: _____

- 11 Does the organization operate gaming activities with nonmembers? Yes No
- 12 Is the organization a grantor, beneficiary or trustee of a trust or a member of a partnership or other entity formed to administer charitable gaming? Yes No
- 13 Indicate the percentage of gaming activity operated in:

a The organization's facility	13a	%
b An outside facility	13b	%
- 14 Enter the name and address of the person who prepares the organization's gaming/special events books and records:

Name ► _____

Address ► _____

- 15a Does the organization have a contract with a third party from whom the organization receives gaming revenue? Yes No
- b If "Yes," enter the amount of gaming revenue received by the organization ► \$ _____ and the amount of gaming revenue retained by the third party ► \$ _____.
- c If "Yes," enter name and address of the third party:

Name ► _____

Address ► _____

16 Gaming manager information:

Name ► _____

Gaming manager compensation ► \$ _____

Description of services provided ► _____

Director/officer Employee Independent contractor

17 Mandatory distributions:

- a Is the organization required under state law to make charitable distributions from the gaming proceeds to retain the state gaming license? Yes No
- b Enter the amount of distributions required under state law to be distributed to other exempt organizations or spent in the organization's own exempt activities during the tax year ► \$ _____

Part IV **Supplemental Information.** Complete this part to provide the explanations required by Part I, line 2b, columns (iii) and (v), and Part III, lines 9, 9b, 10b, 15b, 15c, 16, and 17b, as applicable. Also complete this part to provide any additional information (see instructions).

**SCHEDULE J
(Form 990)**

Department of the Treasury
Internal Revenue Service

Compensation Information

For certain Officers, Directors, Trustees, Key Employees, and Highest Compensated Employees

▶ Complete if the organization answered "Yes" to Form 990, Part IV, line 23.

▶ Attach to Form 990. ▶ See separate instructions.

OMB No. 1545-0047

2011

Open to Public Inspection

Name of the organization

THE CONSERVATION FOUNDATION

Employer identification number

23-7221206

Part I Questions Regarding Compensation

	Yes	No								
<p>1a Check the appropriate box(es) if the organization provided any of the following to or for a person listed in Form 990, Part VII, Section A, line 1a. Complete Part III to provide any relevant information regarding these items.</p> <table border="0"> <tr> <td><input type="checkbox"/> First-class or charter travel</td> <td><input type="checkbox"/> Housing allowance or residence for personal use</td> </tr> <tr> <td><input type="checkbox"/> Travel for companions</td> <td><input type="checkbox"/> Payments for business use of personal residence</td> </tr> <tr> <td><input type="checkbox"/> Tax indemnification and gross-up payments</td> <td><input type="checkbox"/> Health or social club dues or initiation fees</td> </tr> <tr> <td><input type="checkbox"/> Discretionary spending account</td> <td><input type="checkbox"/> Personal services (e.g., maid, chauffeur, chef)</td> </tr> </table>	<input type="checkbox"/> First-class or charter travel	<input type="checkbox"/> Housing allowance or residence for personal use	<input type="checkbox"/> Travel for companions	<input type="checkbox"/> Payments for business use of personal residence	<input type="checkbox"/> Tax indemnification and gross-up payments	<input type="checkbox"/> Health or social club dues or initiation fees	<input type="checkbox"/> Discretionary spending account	<input type="checkbox"/> Personal services (e.g., maid, chauffeur, chef)		
<input type="checkbox"/> First-class or charter travel	<input type="checkbox"/> Housing allowance or residence for personal use									
<input type="checkbox"/> Travel for companions	<input type="checkbox"/> Payments for business use of personal residence									
<input type="checkbox"/> Tax indemnification and gross-up payments	<input type="checkbox"/> Health or social club dues or initiation fees									
<input type="checkbox"/> Discretionary spending account	<input type="checkbox"/> Personal services (e.g., maid, chauffeur, chef)									
<p>b If any of the boxes on line 1a are checked, did the organization follow a written policy regarding payment or reimbursement or provision of all of the expenses described above? If "No," complete Part III to explain</p>	1b									
<p>2 Did the organization require substantiation prior to reimbursing or allowing expenses incurred by all officers, directors, trustees, and the CEO/Executive Director, regarding the items checked in line 1a?</p>	2									
<p>3 Indicate which, if any, of the following the filing organization used to establish the compensation of the organization's CEO/Executive Director. Check all that apply. Do not check any boxes for methods used by a related organization to establish compensation of the CEO/Executive Director. Explain in Part III.</p> <table border="0"> <tr> <td><input type="checkbox"/> Compensation committee</td> <td><input type="checkbox"/> Written employment contract</td> </tr> <tr> <td><input type="checkbox"/> Independent compensation consultant</td> <td><input checked="" type="checkbox"/> Compensation survey or study</td> </tr> <tr> <td><input checked="" type="checkbox"/> Form 990 of other organizations</td> <td><input checked="" type="checkbox"/> Approval by the board or compensation committee</td> </tr> </table>	<input type="checkbox"/> Compensation committee	<input type="checkbox"/> Written employment contract	<input type="checkbox"/> Independent compensation consultant	<input checked="" type="checkbox"/> Compensation survey or study	<input checked="" type="checkbox"/> Form 990 of other organizations	<input checked="" type="checkbox"/> Approval by the board or compensation committee				
<input type="checkbox"/> Compensation committee	<input type="checkbox"/> Written employment contract									
<input type="checkbox"/> Independent compensation consultant	<input checked="" type="checkbox"/> Compensation survey or study									
<input checked="" type="checkbox"/> Form 990 of other organizations	<input checked="" type="checkbox"/> Approval by the board or compensation committee									
<p>4 During the year, did any person listed in Form 990, Part VII, Section A, line 1a, with respect to the filing organization or a related organization:</p>										
<p>a Receive a severance payment or change-of-control payment?</p>	4a	X								
<p>b Participate in, or receive payment from, a supplemental nonqualified retirement plan?</p>	4b	X								
<p>c Participate in, or receive payment from, an equity-based compensation arrangement?</p> <p>If "Yes" to any of lines 4a-c, list the persons and provide the applicable amounts for each item in Part III.</p>	4c	X								
<p>Only section 501(c)(3) and 501(c)(4) organizations must complete lines 5-9.</p>										
<p>5 For persons listed in Form 990, Part VII, Section A, line 1a, did the organization pay or accrue any compensation contingent on the revenues of:</p>										
<p>a The organization?</p>	5a	X								
<p>b Any related organization?</p> <p>If "Yes" to line 5a or 5b, describe in Part III.</p>	5b	X								
<p>6 For persons listed in Form 990, Part VII, Section A, line 1a, did the organization pay or accrue any compensation contingent on the net earnings of:</p>										
<p>a The organization?</p>	6a	X								
<p>b Any related organization?</p> <p>If "Yes" to line 6a or 6b, describe in Part III.</p>	6b	X								
<p>7 For persons listed in Form 990, Part VII, Section A, line 1a, did the organization provide any non-fixed payments not described in lines 5 and 6? If "Yes," describe in Part III</p>	7	X								
<p>8 Were any amounts reported in Form 990, Part VII, paid or accrued pursuant to a contract that was subject to the initial contract exception described in Regulations section 53.4958-4(a)(3)? If "Yes," describe in Part III</p>	8	X								
<p>9 If "Yes" to line 8, did the organization also follow the rebuttable presumption procedure described in Regulations section 53.4958-6(c)?</p>	9									

LHA For Paperwork Reduction Act Notice, see the Instructions for Form 990.

Schedule J (Form 990) 2011

Part II Officers, Directors, Trustees, Key Employees, and Highest Compensated Employees. Use duplicate copies if additional space is needed.

For each individual whose compensation must be reported in Schedule J, report compensation from the organization on row (i) and from related organizations, described in the instructions, on row (ii). Do not list any individuals that are not listed on Form 990, Part VII.

Note. The sum of columns (B)(i)-(iii) for each listed individual must equal the total amount of Form 990, Part VII, Section A, line 1a, applicable column (D) and (E) amounts for that individual.

(A) Name		(B) Breakdown of W-2 and/or 1099-MISC compensation			(C) Retirement and other deferred compensation	(D) Nontaxable benefits	(E) Total of columns (B)(i)-(D)	(F) Compensation reported as deferred in prior Form 990
		(i) Base compensation	(ii) Bonus & incentive compensation	(iii) Other reportable compensation				
1 BROOK MCDONALD	(i)	141,045.	0.	0.	0.	18,922.	159,967.	0.
	(ii)	0.	0.	0.	0.	0.	0.	0.
2	(i)							
	(ii)							
3	(i)							
	(ii)							
4	(i)							
	(ii)							
5	(i)							
	(ii)							
6	(i)							
	(ii)							
7	(i)							
	(ii)							
8	(i)							
	(ii)							
9	(i)							
	(ii)							
10	(i)							
	(ii)							
11	(i)							
	(ii)							
12	(i)							
	(ii)							
13	(i)							
	(ii)							
14	(i)							
	(ii)							
15	(i)							
	(ii)							
16	(i)							
	(ii)							

Transactions With Interested Persons

▶ Complete if the organization answered "Yes" on Form 990, Part IV, line 25a, 25b, 26, 27, 28a, 28b, or 28c, or Form 990-EZ, Part V, line 38a or 40b.
▶ Attach to Form 990 or Form 990-EZ. ▶ See separate instructions.

2011

Open To Public Inspection

Name of the organization **THE CONSERVATION FOUNDATION** Employer identification number **23-7221206**

Part I Excess Benefit Transactions (section 501(c)(3) and section 501(c)(4) organizations only).

Complete if the organization answered "Yes" on Form 990, Part IV, line 25a or 25b, or Form 990-EZ, Part V, line 40b.

1	(a) Name of disqualified person	(b) Description of transaction	(c) Corrected?	
			Yes	No

2 Enter the amount of tax imposed on the organization managers or disqualified persons during the year under section 4958 ▶ \$ _____
3 Enter the amount of tax, if any, on line 2, above, reimbursed by the organization ▶ \$ _____

Part II Loans to and/or From Interested Persons.

Complete if the organization answered "Yes" on Form 990, Part IV, line 26, or Form 990-EZ, Part V, line 38a.

(a) Name of interested person and purpose	(b) Loan to or from the organization?		(c) Original principal amount	(d) Balance due	(e) In default?		(f) Approved by board or committee?		(g) Written agreement?	
	To	From			Yes	No	Yes	No	Yes	No

Total ▶ \$ _____

Part III Grants or Assistance Benefiting Interested Persons.

Complete if the organization answered "Yes" on Form 990, Part IV, line 27.

(a) Name of interested person	(b) Relationship between interested person and the organization	(c) Amount and type of assistance

Part IV Business Transactions Involving Interested Persons.

Complete if the organization answered "Yes" on Form 990, Part IV, line 28a, 28b, or 28c.

(a) Name of interested person	(b) Relationship between interested person and the organization	(c) Amount of transaction	(d) Description of transaction	(e) Sharing of organization's revenues?	
				Yes	No
JOE MIKAN	BOARD MEMBER	14,861.	PURCHASE OF		X
CHRISTOPHER BURKE	BOARD MEMBER	2,000.	RECEIVED EN		X

Part V Supplemental Information

Complete this part to provide additional information for responses to questions on Schedule L (see instructions).

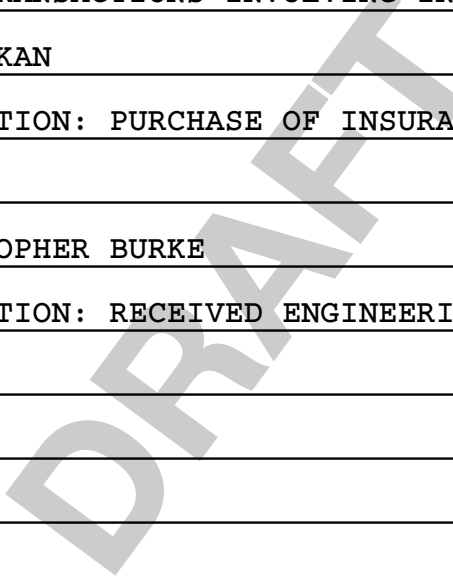
SCH L, PART IV, BUSINESS TRANSACTIONS INVOLVING INTERESTED PERSONS:

(A) NAME OF PERSON: JOE MIKAN

(D) DESCRIPTION OF TRANSACTION: PURCHASE OF INSURANCE

(A) NAME OF PERSON: CHRISTOPHER BURKE

(D) DESCRIPTION OF TRANSACTION: RECEIVED ENGINEERING SERVICES



**SCHEDULE M
(Form 990)**

Noncash Contributions

OMB No. 1545-0047

2011

Open to Public Inspection

Department of the Treasury
Internal Revenue Service

▶ **Complete if the organizations answered "Yes" on Form 990, Part IV, lines 29 or 30.**
▶ **Attach to Form 990.**

Name of the organization **THE CONSERVATION FOUNDATION** Employer identification number **23-7221206**

Part I Types of Property

	(a) Check if applicable	(b) Number of contributions or items contributed	(c) Noncash contribution amounts reported on Form 990, Part VIII, line 1g	(d) Method of determining noncash contribution amounts
1 Art - Works of art				
2 Art - Historical treasures				
3 Art - Fractional interests				
4 Books and publications				
5 Clothing and household goods	X		3,196.	
6 Cars and other vehicles				
7 Boats and planes				
8 Intellectual property				
9 Securities - Publicly traded				
10 Securities - Closely held stock				
11 Securities - Partnership, LLC, or trust interests				
12 Securities - Miscellaneous				
13 Qualified conservation contribution - Historic structures				
14 Qualified conservation contribution - Other				
15 Real estate - Residential				
16 Real estate - Commercial				
17 Real estate - Other	X	1	225,000.	MARKET VALUE
18 Collectibles	X	12	2,370.	MARKET VALUE
19 Food inventory				
20 Drugs and medical supplies				
21 Taxidermy				
22 Historical artifacts				
23 Scientific specimens				
24 Archeological artifacts				
25 Other ▶ (CONSUMABLES)	X	87	24,838.	MARKET VALUE
26 Other ▶ ()				
27 Other ▶ ()				
28 Other ▶ ()				

29 Number of Forms 8283 received by the organization during the tax year for contributions for which the organization completed Form 8283, Part IV, Donee Acknowledgement **29**

	Yes	No
30a During the year, did the organization receive by contribution any property reported in Part I, lines 1-28 that it must hold for at least three years from the date of the initial contribution, and which is not required to be used for exempt purposes for the entire holding period?		X
b If "Yes," describe the arrangement in Part II.		
31 Does the organization have a gift acceptance policy that requires the review of any non-standard contributions?		X
32a Does the organization hire or use third parties or related organizations to solicit, process, or sell noncash contributions?		X
b If "Yes," describe in Part II.		
33 If the organization did not report an amount in column (c) for a type of property for which column (a) is checked, describe in Part II.		

LHA For Paperwork Reduction Act Notice, see the Instructions for Form 990.

Schedule M (Form 990) (2011)

SCHEDULE O
(Form 990 or 990-EZ)

Department of the Treasury
Internal Revenue Service

Supplemental Information to Form 990 or 990-EZ

Complete to provide information for responses to specific questions on
Form 990 or 990-EZ or to provide any additional information.
▶ Attach to Form 990 or 990-EZ.

OMB No. 1545-0047

2011

Open to Public
Inspection

Name of the organization

THE CONSERVATION FOUNDATION

Employer identification number

23-7221206

FORM 990, PART III, LINE 4A, PROGRAM SERVICE ACCOMPLISHMENTS:

DUPAGE RIVER WATERSHED COALITION, A DUES-PAYING ORGANIZATION WORKING TO
IMPROVE WATER QUALITY IN THE DUPAGE RIVER.

FORM 990, PART VI, SECTION B, LINE 11: PROVIDED TO TRUSTEES, WHO WERE
GIVEN ONE WEEK TO PROVIDE ANY COMMENTS.

FORM 990, PART VI, SECTION B, LINE 12C: ANNUAL FORM IS DISTRIBUTED TO
TRUSTEES TO SIGN AND EXPLAIN ANY CONFLICT. TRUSTEES ARE VERBALLY
ENCOURAGED TO REPORT SIGNIFICANT CHANGES.

FORM 990, PART VI, SECTION B, LINE 15: ANNUAL PERFORMANCE REVIEWS FOR ALL
EMPLOYEES, RECOMMENDATION MADE BY REVIEWER FOR ANY COMPENSATION CHANGE.
APPROVED BY CEO AND BOARD TREASURER.

FORM 990, PART VI, SECTION C, LINE 19: AT OUR WEBSITE AND "AVAILABLE UPON
REQUEST."

FORM 990, PART XI, LINE 5, CHANGES IN NET ASSETS:

NET UNREALIZED GAINS ON INVESTMENTS: 4,566.

FORM 990, PAGE 12, PART XII, LINE 2C

THIS PROCESS HAS NOT CHANGED FROM THE PRIOR YEAR.

Application for Extension of Time To File an Exempt Organization Return

▶ **File a separate application for each return.**

- If you are filing for an **Automatic 3-Month Extension**, complete only **Part I** and check this box **X**
- If you are filing for an **Additional (Not Automatic) 3-Month Extension**, complete only **Part II** (on page 2 of this form).

Do not complete Part II unless you have already been granted an automatic 3-month extension on a previously filed Form 8868.

Electronic filing (e-file) - You can electronically file Form 8868 if you need a 3-month automatic extension of time to file (6 months for a corporation required to file Form 990-T), or an additional (not automatic) 3-month extension of time. You can electronically file Form 8868 to request an extension of time to file any of the forms listed in Part I or Part II with the exception of Form 8870, Information Return for Transfers Associated With Certain Personal Benefit Contracts, which must be sent to the IRS in paper format (see instructions). For more details on the electronic filing of this form, visit www.irs.gov/efile and click on *e-file for Charities & Nonprofits*.

Part I Automatic 3-Month Extension of Time. Only submit original (no copies needed).

A corporation required to file Form 990-T and requesting an automatic 6-month extension - check this box and complete Part I only

All other corporations (including 1120-C filers), partnerships, REMICs, and trusts must use Form 7004 to request an extension of time to file income tax returns.

Type or print	Name of exempt organization or other filer, see instructions. THE CONSERVATION FOUNDATION	Employer identification number (EIN) or <input checked="" type="checkbox"/> 23-7221206
File by the due date for filing your return. See instructions.	Number, street, and room or suite no. If a P.O. box, see instructions. 10S404 KNOCH KNOLLS ROAD	Social security number (SSN) <input type="checkbox"/>
	City, town or post office, state, and ZIP code. For a foreign address, see instructions. NAPERVILLE, IL 60565	

Enter the Return code for the return that this application is for (file a separate application for each return) 01

Application Is For	Return Code	Application Is For	Return Code
Form 990	01	Form 990-T (corporation)	07
Form 990-BL	02	Form 1041-A	08
Form 990-EZ	01	Form 4720	09
Form 990-PF	04	Form 5227	10
Form 990-T (sec. 401(a) or 408(a) trust)	05	Form 6069	11
Form 990-T (trust other than above)	06	Form 8870	12

BROOK MCDONALD

- The books are in the care of ▶ 10S404 KNOCH KNOLLS ROAD - NAPERVILLE, IL 60565-5404
 Telephone No. ▶ 630-428-4500 FAX No. ▶ _____
- If the organization does not have an office or place of business in the United States, check this box
- If this is for a Group Return, enter the organization's four digit Group Exemption Number (GEN) _____. If this is for the whole group, check this box . If it is for part of the group, check this box and attach a list with the names and EINs of all members the extension is for.

1 I request an automatic 3-month (6 months for a corporation required to file Form 990-T) extension of time until **FEBRUARY 15, 2013**, to file the exempt organization return for the organization named above. The extension is for the organization's return for:
 ▶ calendar year _____ or
 ▶ tax year beginning **JUL 1, 2011**, and ending **JUN 30, 2012**.

2 If the tax year entered in line 1 is for less than 12 months, check reason: Initial return Final return
 Change in accounting period

3a If this application is for Form 990-BL, 990-PF, 990-T, 4720, or 6069, enter the tentative tax, less any nonrefundable credits. See instructions.	3a	\$	0.
b If this application is for Form 990-PF, 990-T, 4720, or 6069, enter any refundable credits and estimated tax payments made. Include any prior year overpayment allowed as a credit.	3b	\$	0.
c Balance due. Subtract line 3b from line 3a. Include your payment with this form, if required, by using EFTPS (Electronic Federal Tax Payment System). See instructions.	3c	\$	0.

Caution. If you are going to make an electronic fund withdrawal with this Form 8868, see Form 8453-EO and Form 8879-EO for payment instructions.

**IRS e-file Signature Authorization
for an Exempt Organization**

For calendar year 2011, or fiscal year beginning JUL 1, 2011, and ending JUN 30, 2012

2011

Department of the Treasury
Internal Revenue Service

▶ **Do not send to the IRS. Keep for your records.**
▶ **See instructions.**

Name of exempt organization

Employer identification number

THE CONSERVATION FOUNDATION

23-7221206

Name and title of officer

**BROOK MCDONALD
PRESIDENT/CEO**

Part I Type of Return and Return Information (Whole Dollars Only)

Check the box for the return for which you are using this Form 8879-EO and enter the applicable amount, if any, from the return. If you check the box on line 1a, 2a, 3a, 4a, or 5a, below, and the amount on that line for the return being filed with this form was blank, then leave line 1b, 2b, 3b, 4b, or 5b, whichever is applicable, blank (do not enter -0-). But, if you entered -0- on the return, then enter -0- on the applicable line below. **Do not** complete more than 1 line in Part I.

1a Form 990 check here ▶ <input checked="" type="checkbox"/>	b Total revenue , if any (Form 990, Part VIII, column (A), line 12)	1b <u>1170419</u>
2a Form 990-EZ check here ▶ <input type="checkbox"/>	b Total revenue , if any (Form 990-EZ, line 9)	2b _____
3a Form 1120-POL check here ▶ <input type="checkbox"/>	b Total tax (Form 1120-POL, line 22)	3b _____
4a Form 990-PF check here ▶ <input type="checkbox"/>	b Tax based on investment income (Form 990-PF, Part VI, line 5)	4b _____
5a Form 8868 check here ▶ <input type="checkbox"/>	b Balance Due (Form 8868, Part I, line 3c or Part II, line 8c)	5b _____

Part II Declaration and Signature Authorization of Officer

Under penalties of perjury, I declare that I am an officer of the above organization and that I have examined a copy of the organization's 2011 electronic return and accompanying schedules and statements and to the best of my knowledge and belief, they are true, correct, and complete. I further declare that the amount in Part I above is the amount shown on the copy of the organization's electronic return. I consent to allow my intermediate service provider, transmitter, or electronic return originator (ERO) to send the organization's return to the IRS and to receive from the IRS (a) an acknowledgement of receipt or reason for rejection of the transmission, (b) the reason for any delay in processing the return or refund, and (c) the date of any refund. If applicable, I authorize the U.S. Treasury and its designated Financial Agent to initiate an electronic funds withdrawal (direct debit) entry to the financial institution account indicated in the tax preparation software for payment of the organization's federal taxes owed on this return, and the financial institution to debit the entry to this account. To revoke a payment, I must contact the U.S. Treasury Financial Agent at 1-888-353-4537 no later than 2 business days prior to the payment (settlement) date. I also authorize the financial institutions involved in the processing of the electronic payment of taxes to receive confidential information necessary to answer inquiries and resolve issues related to the payment. I have selected a personal identification number (PIN) as my signature for the organization's electronic return and, if applicable, the organization's consent to electronic funds withdrawal.

Officer's PIN: check one box only

I authorize WOLF & COMPANY LLP to enter my PIN 65329
ERO firm name Enter five numbers, but do not enter all zeros

as my signature on the organization's tax year 2011 electronically filed return. If I have indicated within this return that a copy of the return is being filed with a state agency(ies) regulating charities as part of the IRS Fed/State program, I also authorize the aforementioned ERO to enter my PIN on the return's disclosure consent screen.

As an officer of the organization, I will enter my PIN as my signature on the organization's tax year 2011 electronically filed return. If I have indicated within this return that a copy of the return is being filed with a state agency(ies) regulating charities as part of the IRS Fed/State program, I will enter my PIN on the return's disclosure consent screen.

Officer's signature ▶ _____ Date ▶ _____

Part III Certification and Authentication

ERO's EFIN/PIN. Enter your six-digit electronic filing identification number (EFIN) followed by your five-digit self-selected PIN.

36204721000
do not enter all zeros

I certify that the above numeric entry is my PIN, which is my signature on the 2011 electronically filed return for the organization indicated above. I confirm that I am submitting this return in accordance with the requirements of **Pub. 4163**, Modernized e-File (MeF) Information for Authorized IRS e-file Providers for Business Returns.

ERO's signature ▶ _____ Date ▶ _____

**ERO Must Retain This Form - See Instructions
Do Not Submit This Form To the IRS Unless Requested To Do So**

TAX RETURN FILING INSTRUCTIONS

ILLINOIS FORM AG990-IL

FOR THE YEAR ENDING

..... June 30, 2012

Prepared for	Mr. Brook McDonald The Conservation Foundation 10S404 Knoch Knolls Road Naperville, IL 60565
Prepared by	Wolf & Company LLP 1901 S. Meyers Rd, Suite 500 Oakbrook Terrace, IL 60181-5209
Amount due or refund	Balance due of \$15
Make check payable to	Illinois Charity Bureau Fund
Mail tax return and check (if applicable) to	Office of the Attorney General Charitable Trust Bureau 100 West Randolph St., 11th Floor Chicago, IL 60601-3175
Return must be mailed on or before	Please mail as soon as possible.
Special Instructions	Form AG990-IL should be signed and dated by the required individual(s). Include the organization's Illinois charitable organization number and "2011 Form AG990-IL" on the remittance.

ILLINOIS CHARITABLE ORGANIZATION ANNUAL REPORT

PMT #	_____
AMT	_____
INIT	_____

Attorney General LISA MADIGAN State of Illinois
Charitable Trust Bureau, 100 West Randolph
11th Floor, Chicago, Illinois 60601

CO # 01007016

Report for the Fiscal Period:

Beginning 07/01/2011

& Ending 06/30/2012
MO DAY YR

Make Checks Payable to the Illinois Charity Bureau Fund

- Check all items attached:**
- Copy of IRS Return
 - Audited Financial Statements
 - Copy of Form IFC
 - \$15.00 Annual Report Filing Fee
 - \$100.00 Late Report Filing Fee
- MO DAY YR

Federal ID # 23-7221206

Are contributions to the organization tax deductible?

Yes No

Date Organization was created:

LEGAL NAME THE CONSERVATION FOUNDATION	Year-end amounts	
MAIL ADDRESS 10S404 KNOCH KNOLLS ROAD	A) ASSETS	A) \$ 3,928,359.
CITY, STATE NAPERVILLE, IL	B) LIABILITIES	B) \$ 354,997.
ZIP CODE 60565	C) NET ASSETS	C) \$ 3,573,362.
I. SUMMARY OF ALL REVENUE ITEMS DURING THE YEAR:	PERCENTAGE	AMOUNT
D) PUBLIC SUPPORT, CONTRIBUTIONS & PROGRAM SERVICE REV. (GROSS AMTS.)	91.250%	D) \$ 1,135,819.
E) GOVERNMENT GRANTS & MEMBERSHIP DUES	3.578%	E) \$ 44,541.
F) OTHER REVENUES	5.172%	F) \$ 64,376.
G) TOTAL REVENUE, INCOME AND CONTRIBUTIONS RECEIVED (ADD D, E, & F)	100 %	G) \$ 1,244,736.
II. SUMMARY OF ALL EXPENDITURES DURING THE YEAR:		
H) OPERATING CHARITABLE PROGRAM EXPENSE	77.748%	H) \$ 993,274.
I) EDUCATION PROGRAM SERVICE EXPENSE	%	I) \$
J) TOTAL CHARITABLE PROGRAM SERVICE EXPENSE (ADD H & I)	77.748%	J) \$ 993,274.
K) JOINT COSTS ALLOCATED TO PROGRAM SERVICES (INCLUDED IN J):		\$
K) GRANTS TO OTHER CHARITABLE ORGANIZATIONS	%	K) \$
L) TOTAL CHARITABLE PROGRAM SERVICE EXPENDITURE (ADD J & K)	77.748%	L) \$ 993,274.
M) MANAGEMENT AND GENERAL EXPENSE	5.832%	M) \$ 74,503.
N) FUNDRAISING EXPENSE	16.421%	N) \$ 209,782.
O) TOTAL EXPENDITURES THIS PERIOD (ADD L, M, & N)	100 %	O) \$ 1,277,559.
III. SUMMARY OF ALL PAID FUNDRAISER AND CONSULTANT ACTIVITIES: (Attach Attorney General Report of Individual Fundraising Campaign- Form IFC. One for each PFR.)		
PROFESSIONAL FUNDRAISERS:		
P) TOTAL AMOUNT RAISED BY PAID PROFESSIONAL FUNDRAISERS	100 %	P) \$ 0.
Q) TOTAL FUNDRAISERS FEES AND EXPENSES	%	Q) \$
R) NET RECEIVED BY THE CHARITY (P MINUS Q=R)	%	R) \$
PROFESSIONAL FUNDRAISING CONSULTANTS:		
S) TOTAL AMOUNT PAID TO PROFESSIONAL FUNDRAISING CONSULTANTS		S) \$ 0.
IV. COMPENSATION TO THE (3) HIGHEST PAID PERSONS DURING THE YEAR:		
T) NAME, TITLE: BROOK MCDONALD, EXECUTIVE DIRECTOR		T) \$ 164,067.
U) NAME, TITLE: CHERE HAYES, DIRECTOR OF DEVELOPMENT		U) \$ 95,963.
V) NAME, TITLE: DAN LOBBES, DIRECTOR OF LAND PROTECTION		V) \$ 93,700.
V. CHARITABLE PROGRAM DESCRIPTION: CHARITABLE PROGRAM (3 HIGHEST BY \$ EXPENDED) CODE CATEGORIES		List on back side of instructions CODE
W) DESCRIPTION: PRESERVATION/CONSERVATION OF NATURAL RESOURCES		W) # 080
X) DESCRIPTION:		X) #
Y) DESCRIPTION:		Y) #

IF THE ANSWER TO ANY OF THE FOLLOWING IS YES, ATTACH A DETAILED EXPLANATION:		YES	NO
1.	WAS THE ORGANIZATION THE SUBJECT OF ANY COURT ACTION, FINE, PENALTY OR JUDGMENT?		X
2.	HAS THE ORGANIZATION OR A CURRENT DIRECTOR, TRUSTEE, OFFICER OR EMPLOYEE THEREOF, EVER BEEN CONVICTED BY ANY COURT OF ANY MISDEMEANOR INVOLVING THE MISUSE OR MISAPPROPRIATION OF FUNDS OR ANY FELONY?		X
3.	DID THE ORGANIZATION MAKE A GRANT AWARD OR CONTRIBUTION TO ANY ORGANIZATION IN WHICH ANY OF ITS OFFICERS, DIRECTORS OR TRUSTEES OWNS AN INTEREST; OR WAS IT A PARTY TO ANY TRANSACTION IN WHICH ANY OF ITS OFFICERS, DIRECTORS OR TRUSTEES HAS A MATERIAL FINANCIAL INTEREST; OR DID ANY OFFICER, DIRECTOR OR TRUSTEE RECEIVE ANYTHING OF VALUE NOT REPORTED AS COMPENSATION?		X
4.	HAS THE ORGANIZATION INVESTED IN ANY CORPORATE STOCK IN WHICH ANY OFFICER, DIRECTOR OR TRUSTEE OWNS MORE THAN 10% OF THE OUTSTANDING SHARES?		X
5.	IS ANY PROPERTY OF THE ORGANIZATION HELD IN THE NAME OF OR COMMINGLED WITH THE PROPERTY OF ANY OTHER PERSON OR ORGANIZATION?		X
6.	DID THE ORGANIZATION USE THE SERVICES OF A PROFESSIONAL FUNDRAISER? (ATTACH FORM IFC)		X
7a.	DID THE ORGANIZATION ALLOCATE THE COST OF ANY SOLICITATION, MAILING, ADVERTISEMENT OR LITERATURE COSTS BETWEEN PROGRAM SERVICE AND FUNDRAISING EXPENSES?		X
7b.	IF "YES", ENTER (i) THE AGGREGATE AMOUNT OF THESE JOINT COSTS \$ _____; (ii) THE AMOUNT ALLOCATED TO PROGRAM SERVICES \$ _____; (iii) THE AMOUNT ALLOCATED TO MANAGEMENT AND GENERAL \$ _____; AND (iv) THE AMOUNT ALLOCATED TO FUNDRAISING \$ _____		
8.	DID THE ORGANIZATION EXPEND ITS RESTRICTED FUNDS FOR PURPOSES OTHER THAN RESTRICTED PURPOSES?		X
9.	HAS THE ORGANIZATION EVER BEEN REFUSED REGISTRATION OR HAD ITS REGISTRATION OR TAX EXEMPTION SUSPENDED OR REVOKED BY ANY GOVERNMENTAL AGENCY?		X
10.	WAS THERE OR DO YOU HAVE ANY KNOWLEDGE OF ANY KICKBACK, BRIBE, OR ANY THEFT, DEFALCATION, MISAPPROPRIATION, COMMINGLING OR MISUSE OF ORGANIZATIONAL FUNDS?		X
11.	LIST THE NAME AND ADDRESS OF THE FINANCIAL INSTITUTIONS WHERE THE ORGANIZATION MAINTAINS ITS THREE LARGEST ACCOUNTS: <u>FIRST AMERICAN BANK - 700 EAST OGDEN AVE, NAPERVILLE, IL 60563</u> <u>ING ONLINE - P.O. BOX 60 - ST. CLOUD, MN 56302</u> <u>ITASCA BANK & TRUST - 308 WEST IRVING PARK ROAD, ITASCA, IL 60143</u>		
12.	NAME AND TELEPHONE NUMBER OF CONTACT PERSON: <u>BROOK MCDONALD - 630-428-4500</u>		

ALL ATTACHMENTS MUST ACCOMPANY THIS REPORT - SEE INSTRUCTIONS

UNDER PENALTY OF PERJURY, I (WE) THE UNDERSIGNED DECLARE AND CERTIFY THAT I (WE) HAVE EXAMINED THIS ANNUAL REPORT AND THE ATTACHED DOCUMENTS, INCLUDING ALL THE SCHEDULES AND STATEMENTS AND THE FACTS THEREIN STATED ARE TRUE AND COMPLETE AND FILED WITH THE ILLINOIS ATTORNEY GENERAL FOR THE PURPOSE OF HAVING THE PEOPLE OF THE STATE OF ILLINOIS RELY THEREUPON. I HEREBY FURTHER AUTHORIZE AND AGREE TO SUBMIT MYSELF AND THE REGISTRANT HEREBY TO THE JURISDICTION OF THE STATE OF ILLINOIS.

BE SURE TO INCLUDE ALL FEES DUE:

- 1.) REPORTS ARE DUE WITHIN SIX MONTHS OF YOUR FISCAL YEAR END.
- 2.) FOR FEES DUE SEE INSTRUCTIONS.
- 3.) REPORTS THAT ARE LATE OR INCOMPLETE ARE SUBJECT TO A \$100.00 PENALTY.

BROOK MCDONALD

PRESIDENT or TRUSTEE (PRINT NAME)

SIGNATURE

DATE

TOM SCHNEIDER

TREASURER or TRUSTEE (PRINT NAME)

SIGNATURE

DATE

SCOTT C. TERMINE

PREPARER (PRINT NAME)

SIGNATURE

DATE