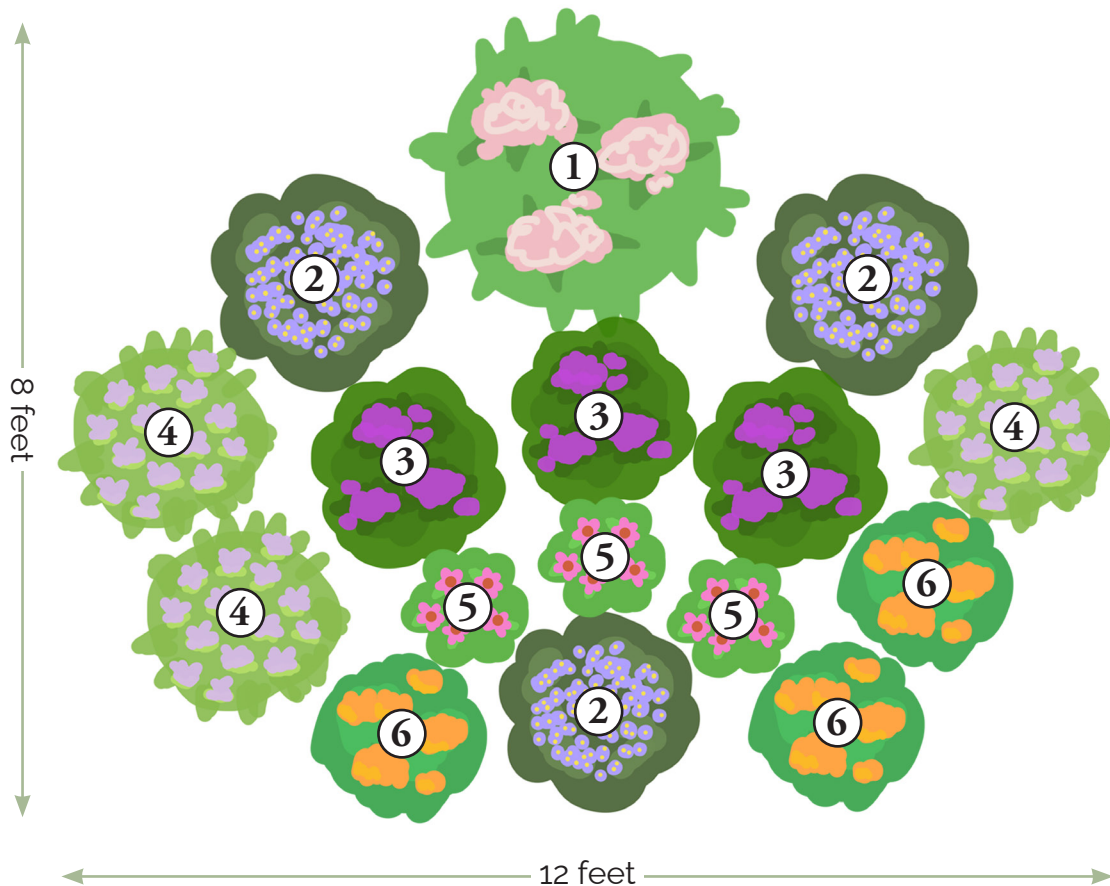




BUTTERFLY/POLLINATOR

Native Garden Kit Design



- ① Spotted Joe Pye Weed (*Eupatoriadelphus maculatus*)
1 plant, 3-foot spacing
- ② Smooth Blue Aster (*Symphyotrichum laeve*)
3 plants, 2-foot spacing
- ③ Ironweed (*Vernonia fasciculata*)
3 plants, 2-foot spacing
- ④ Wild Bergamot (*Monarda fistulosa*)
3 plants, 2-foot spacing
- ⑤ Purple Coneflower (*Echinacea purpurea*)
3 plants, 1-foot spacing
- ⑥ Butterfly Milkweed (*Asclepias tuberosa*)
3 plants, 2-foot spacing

Suggested add-ons*: Showy Goldenrod (*Solidago speciosa*), Sideoats Grama (*Bouteloua curtipendula*), Purple Love Grass (*Eragrostis spectabilis*), and Rough Blazing Star (*Liatris aspera*).

*Individual plants can be purchased at our in-person sale.