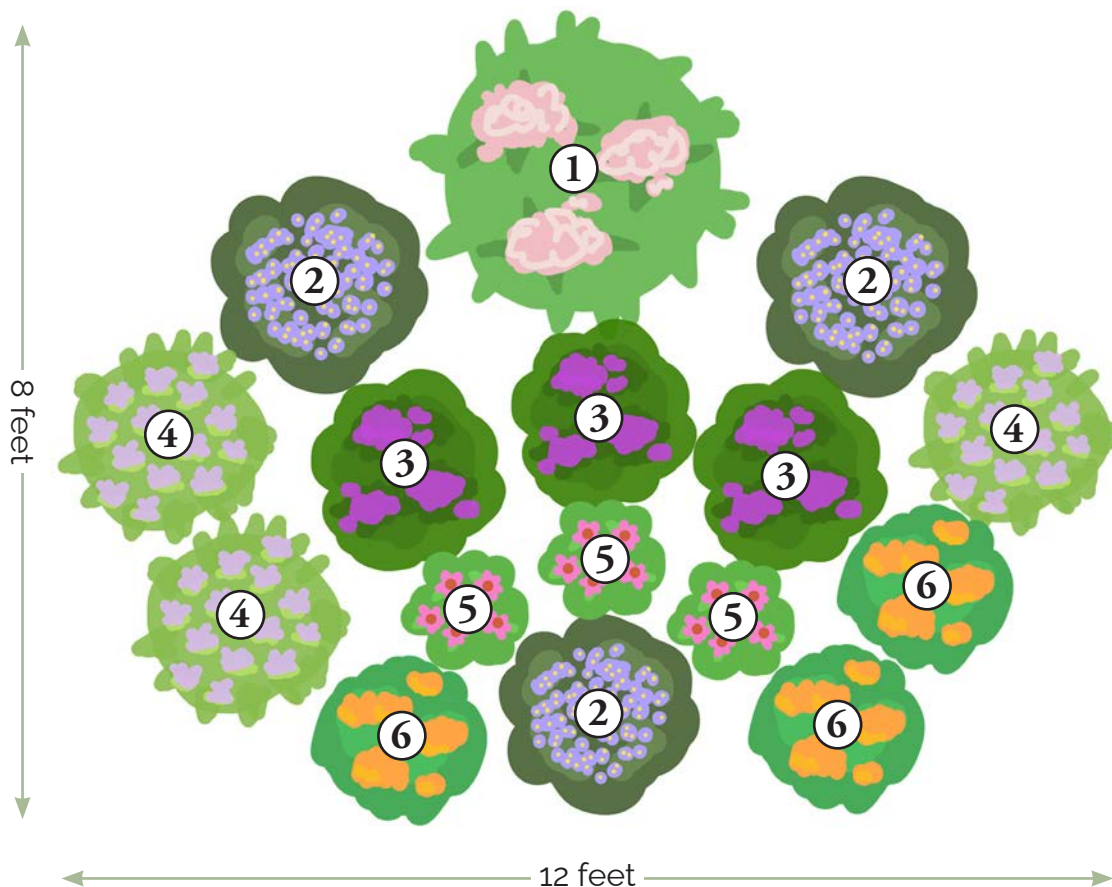




# BUTTERFLY/POLLINATOR

## Native Garden Kit Design



- ① Spotted Joe Pye Weed (*Eupatoriadelphus maculatus*)  
1 plant, 3-foot spacing
- ② Smooth Blue Aster (*Symphyotrichum laeve*)  
3 plants, 2-foot spacing
- ③ Ironweed (*Vernonia fasciculata*)  
3 plants, 2-foot spacing
- ④ Wild Bergamot (*Monarda fistulosa*)  
3 plants, 2-foot spacing
- ⑤ Purple Coneflower (*Echinacea purpurea*)  
3 plants, 1-foot spacing
- ⑥ Butterfly Milkweed (*Asclepias tuberosa*)  
3 plants, 2-foot spacing

Suggested add-ons\*: Showy Goldenrod (*Solidago speciosa*), Sideoats Grama (*Bouteloua curtipendula*), Purple Love Grass (*Eragrostis spectabilis*), and Rough Blazing Star (*Liatris aspera*).

\*Individual plants can be purchased at our in-person sale.