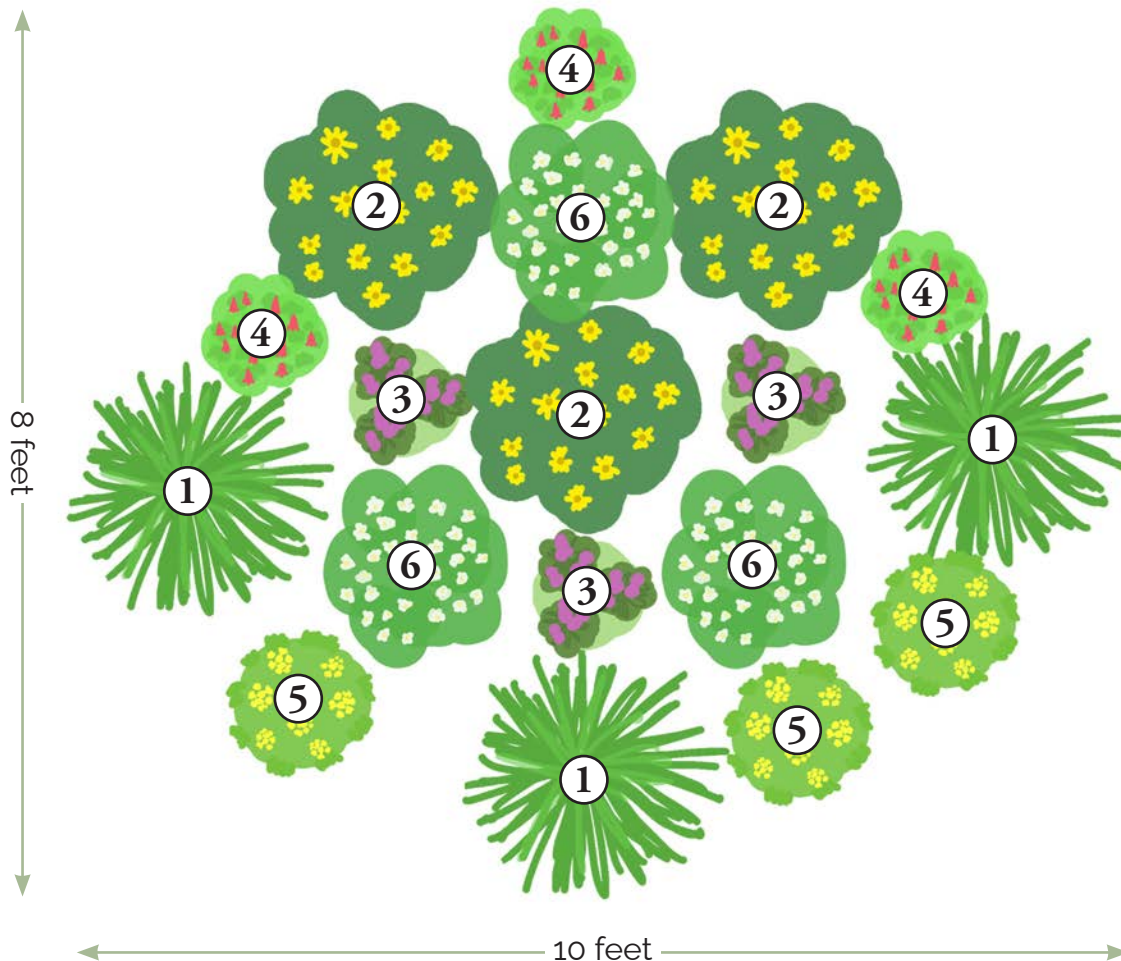




SUN/PART SHADE

Native Garden Kit Design



- ① **Prairie Dropseed** (*Sporobolus heterolepis*)
3 plants, 2-foot spacing
- ② **False (Early) Sunflower** (*Heliopsis helianthoides*)
3 plants, 2-foot spacing
- ③ **Rough Blazing Star** (*Liatris aspera*)
3 plants, 1-foot spacing
- ④ **Columbine** (*Aquilegia canadensis*)
3 plants, 1-foot spacing
- ⑤ **Golden Alexander** (*Zizia aurea*)
3 plants, 1-foot spacing
- ⑥ **Upland White Aster** (*Oligoneuron album*)
3 plants, 2-foot spacing

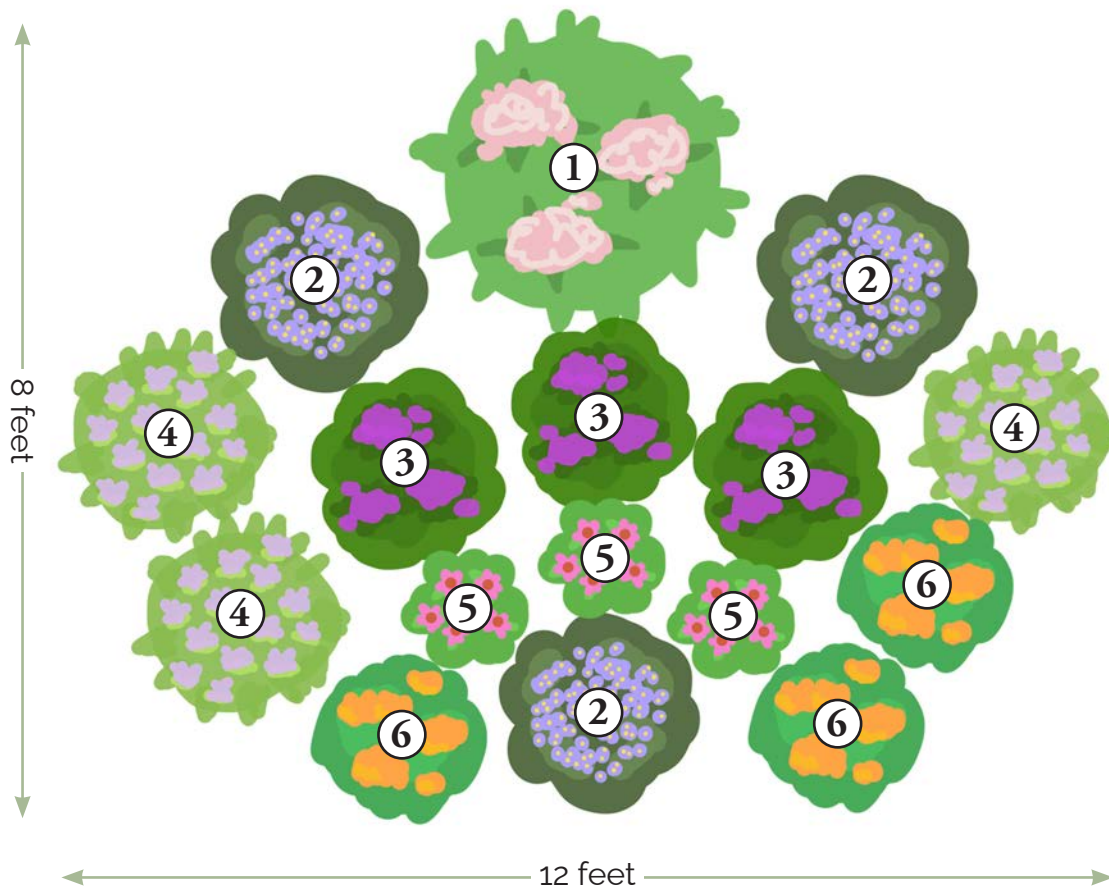
Suggested add-ons*: Black-eyed Susan (*Rudbeckia hirta*), Butterfly Milkweed (*Asclepias tuberosa*), and Purple Coneflower (*Echinacea purpurea*).

*Individual plants can be purchased at our in-person sale.



BUTTERFLY/POLLINATOR

Native Garden Kit Design



- ① Spotted Joe Pye Weed (*Eupatoriadelphus maculatus*)
1 plant, 3-foot spacing
- ② Smooth Blue Aster (*Symphyotrichum laeve*)
3 plants, 2-foot spacing
- ③ Ironweed (*Vernonia fasciculata*)
3 plants, 2-foot spacing
- ④ Wild Bergamot (*Monarda fistulosa*)
3 plants, 2-foot spacing
- ⑤ Purple Coneflower (*Echinacea purpurea*)
3 plants, 1-foot spacing
- ⑥ Butterfly Milkweed (*Asclepias tuberosa*)
3 plants, 2-foot spacing

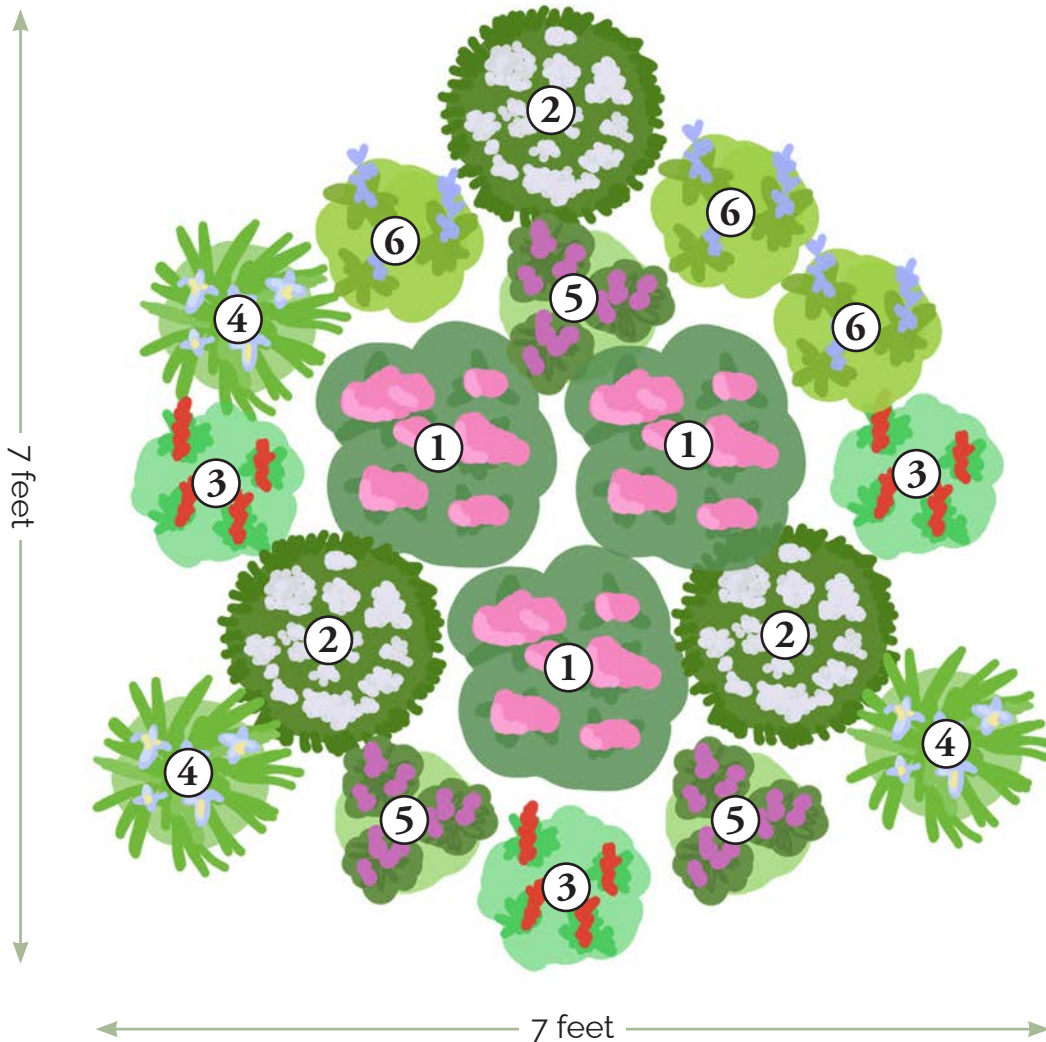
Suggested add-ons*: Showy Goldenrod (*Solidago speciosa*), Sideoats Grama (*Bouteloua curtipendula*), Purple Love Grass (*Eragrostis spectabilis*), and Rough Blazing Star (*Liatris aspera*).

*Individual plants can be purchased at our in-person sale.



RAIN GARDEN

Native Garden Kit Design



- ① Swamp Milkweed (*Asclepias incarnata*)
3 plants, 1.5-foot spacing
- ② Mountain Mint (*Pycnanthemum virginianum*)
3 plants, 1.5-foot spacing
- ③ Cardinal Flower (*Lobelia cardinalis*)
3 plants, 1-foot spacing
- ④ Blue Flag Iris (*Iris virginica var. shrevei*)
3 plants, 1-foot spacing
- ⑤ Marsh Blazing Star (*Liatris spicata*)
3 plants, 1-foot spacing
- ⑥ Great Blue Lobelia (*Lobelia siphilitica*)
3 plants, 1-foot spacing

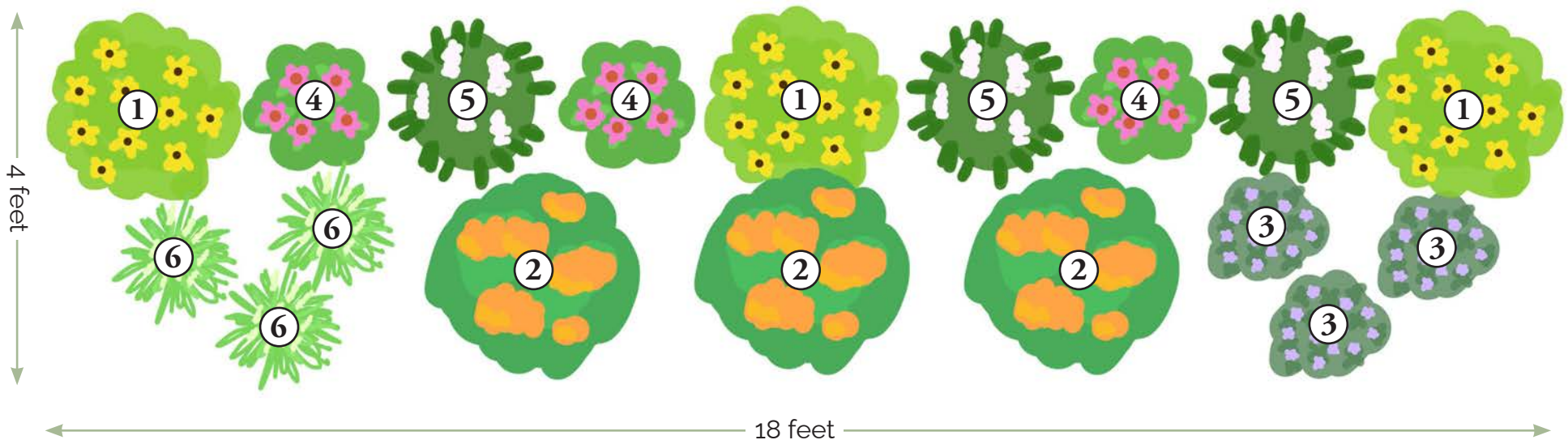
Suggested add-ons*: Rattlesnake master (*Eryngium yuccifolium*) and Golden Alexander (*Zizia aurea*).

*Individual plants can be purchased at our in-person sale.



FRONT YARD/BORDER

Native Garden Kit Design



① Black-eyed Susan (*Rudbeckia hirta*)
3 plants, 2-foot spacing

② Butterfly Milkweed (*Asclepias tuberosa*)
3 plants, 2-foot spacing

③ Prairie Petunia (*Ruellia humilis*)
3 plants, 1-foot spacing

④ Purple Coneflower (*Echinacea purpurea*)
3 plants, 1-foot spacing

⑤ Foxglove Beardtongue (*Penstemon digitalis*)
3 plants, 1.5-foot spacing

⑥ June Grass (*Koeleria macrantha*)
3 plants, 1-foot spacing

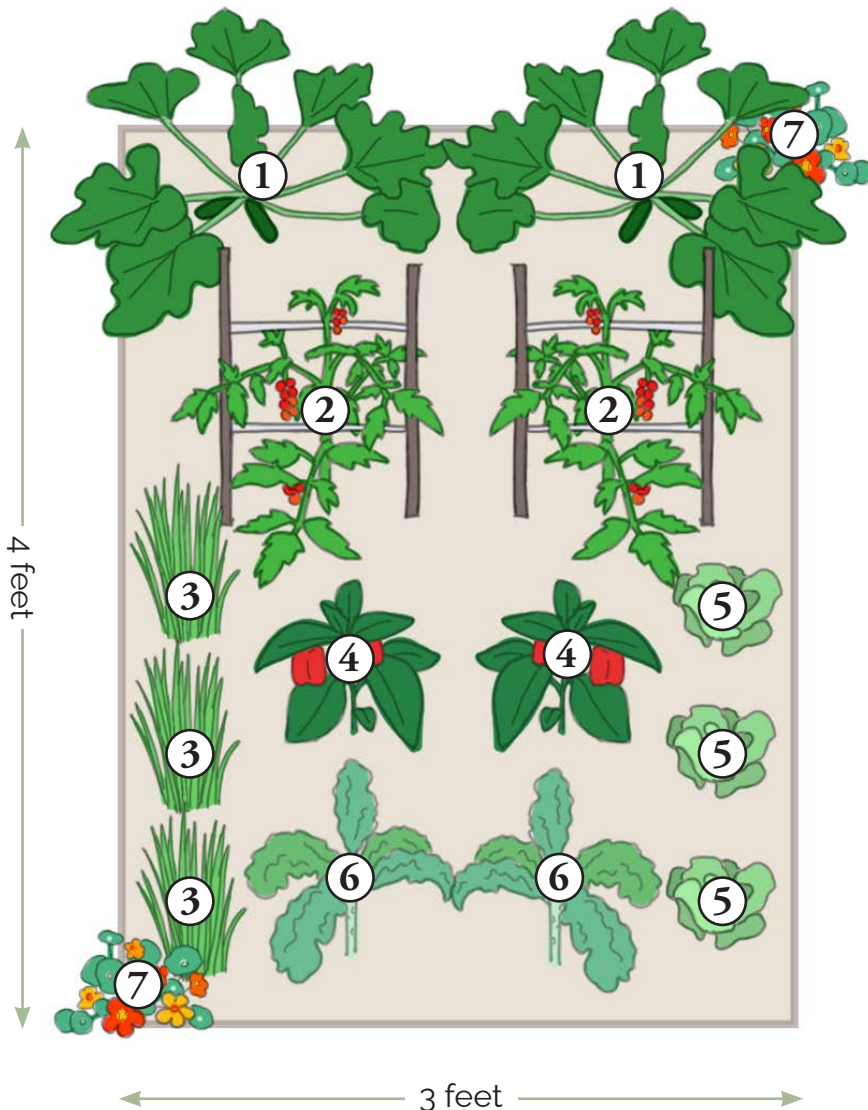
Suggested add-ons: Purple Prairie Clover (*Dalea purpurea*), Showy Goldenrod (*Solidago speciosa*), and Nodding Onion (*Allium cernuum*).

**Individual plants can be purchased at our in-person sale.*



STARTER GARDEN

Vegetable Garden Kit Design



① Dunja Zucchini Squash
2 plants

② Cherry Bomb Cherry Tomato
2 plants

③ Chives
3 plants

④ Lunch Box Sweet Pepper
2 plants

⑤ Lettuce
3 plants

⑥ Darkibor Curly Kale
2 plants

⑦ Suggested add-on*:
Nasturtium
2 plants

**Not included in kit. Individual plants can be purchased at our in-person sale.*

Notes:

- Your garden should have 6-8 hours of sunlight and well-draining, nourished soil for the best results.
- Make sure there is space around all sides of the garden so that you can reach each plant.
- Squash plants will be very large when mature and will grow over the sides of the garden. Consider trellising the squash plants if space is limited.
- Tomatoes should be trellised or caged.
- Lettuce will bolt in hot weather. Try directly seeding green beans in their spot.
- Add nasturtium or other flowers to attract pollinators.